

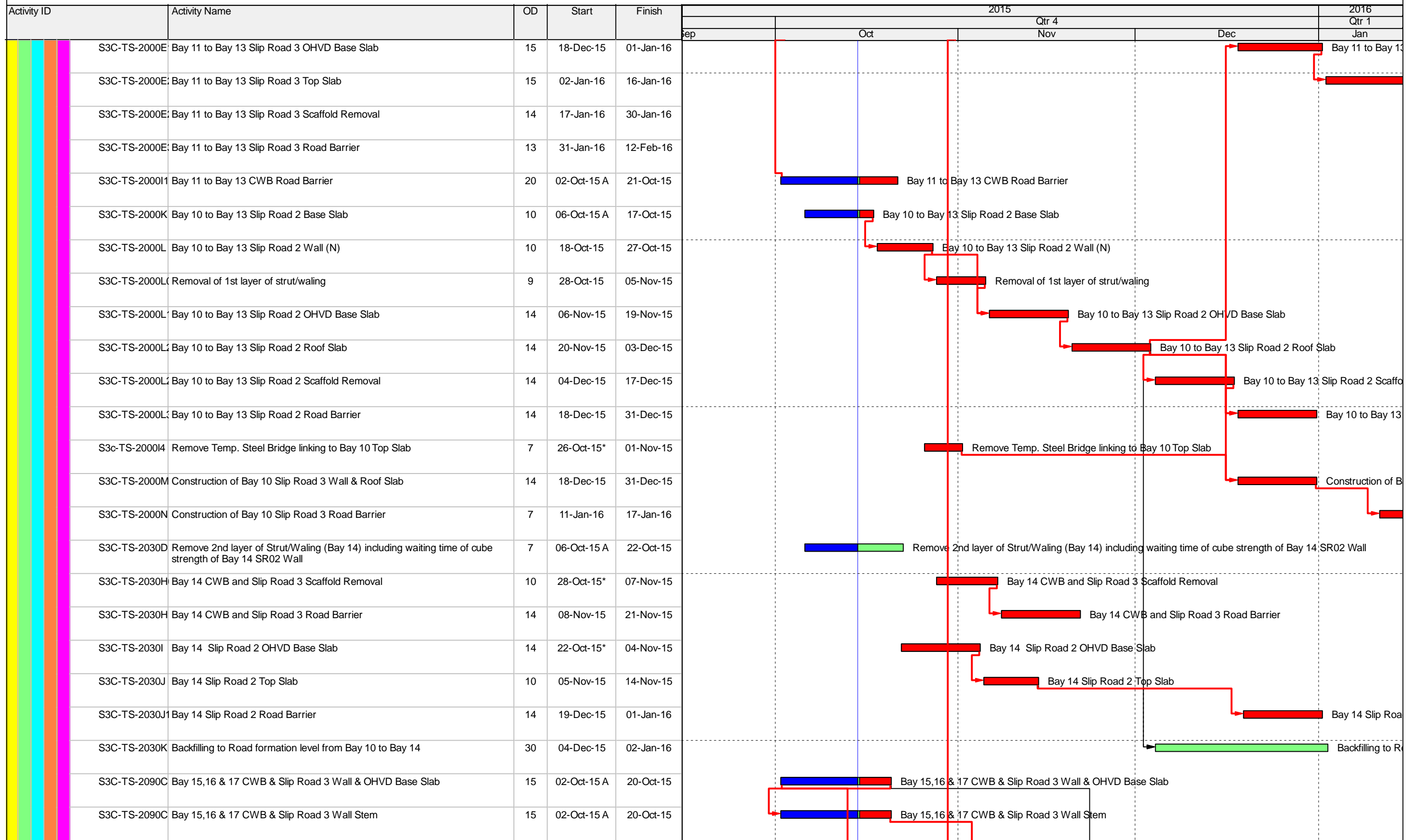
 Remaining Work	 Summa...
 Actual Work	
 Summary Bar	
 Critical Remaining Work	
 Milestone	

CEDD CONTRACT NO. HK/2009/01

Wan Chai Development Phase II - Central-Wan Chai Bypass at HKCEC (Contract 1)

WORKS PROGRAMME Rev.4 - 3 Month Programme starting from 15-Oct-15

Date	Revision	Checked	Appro...
15-Sep-15	Program 6H 15 Sep 2015		
15-Oct-15	Progress Updated on 15 Oct 2015		



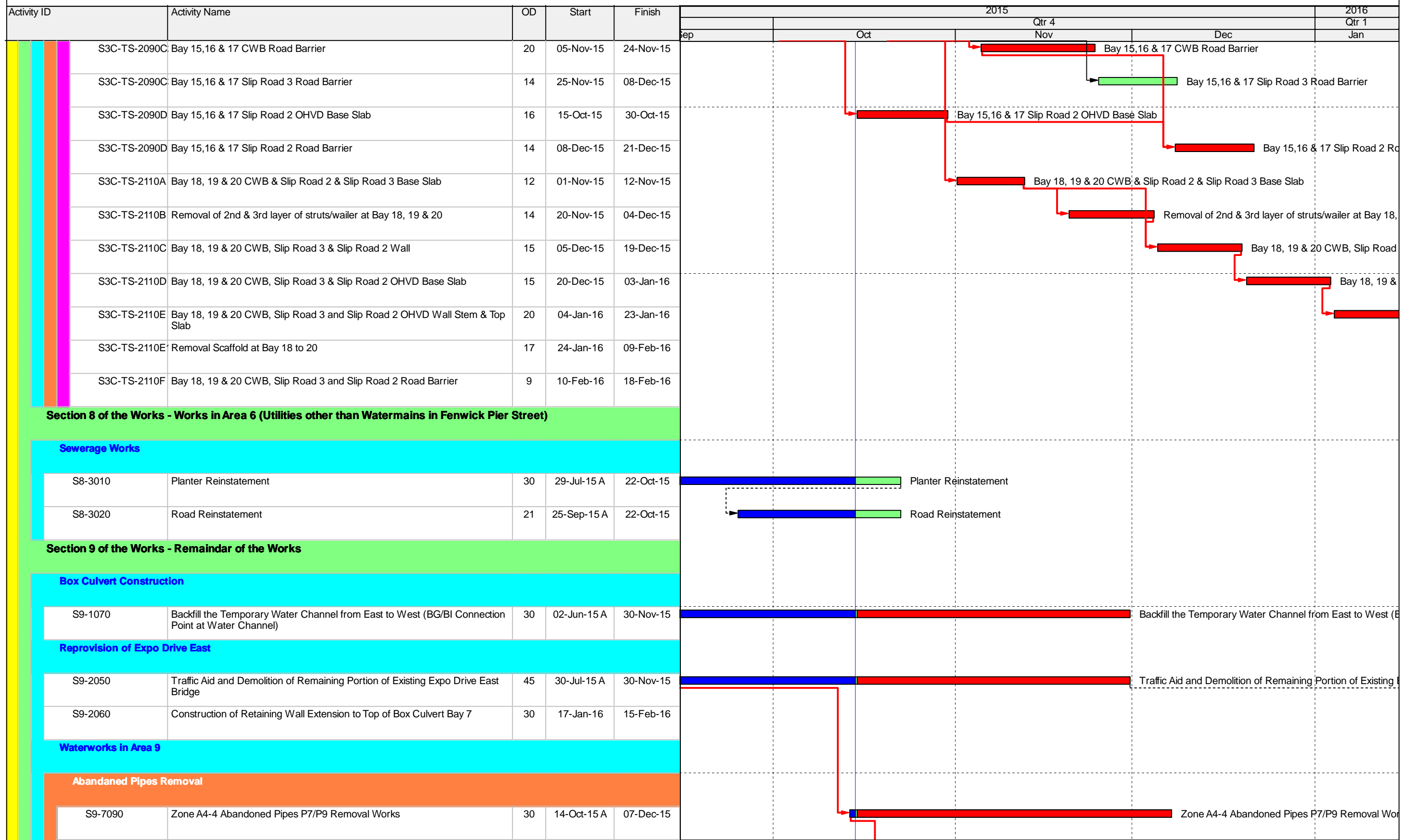
	Remaining Work		Summa...
	Actual Work		
	Summary Bar		
	Critical Remaining Work		
	Milestone		

CEDD CONTRACT NO. HK/2009/01

Wan Chai Development Phase II - Central-Wan Chai Bypass at HKCEC (Contract 1)

WORKS PROGRAMME Rev.4 - 3 Month Programme starting from 15-Oct-15

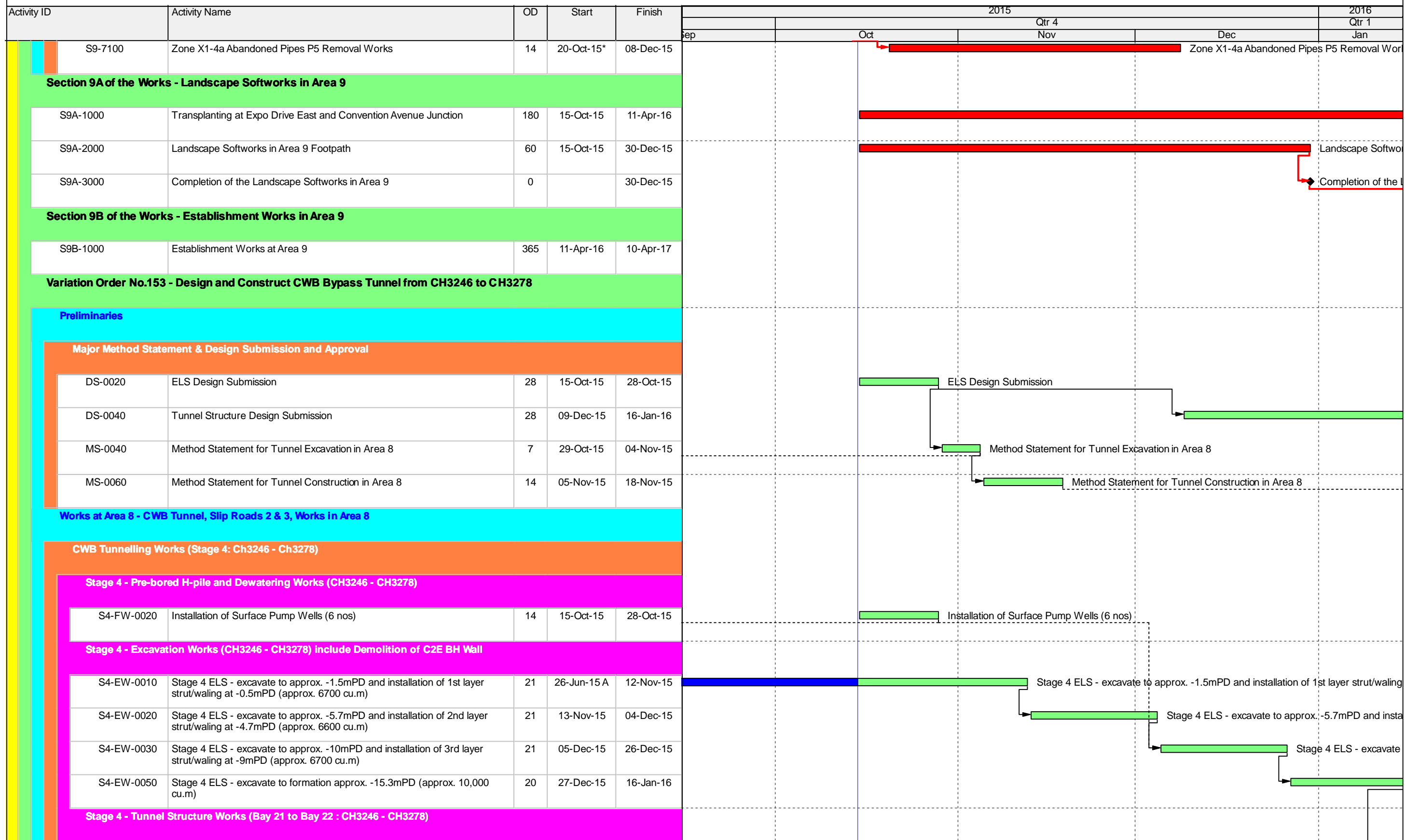
Date	Revision	Checked	Appro...
15-Sep-15	Program 6H 15 Sep 2015		
15-Oct-15	Progress Updated on 15 Oct 2015		



Remaining Work	Summa...
Actual Work	
Summary Bar	
Critical Remaining Work	
Milestone	

CEDD CONTRACT NO. HK/2009/01
 Wan Chai Development Phase II - Central-Wan Chai Bypass at HKCEC (Contract 1)
WORKS PROGRAMME Rev.4 - 3 Month Programme starting from 15-Oct-15

Date	Revision	Checked	Appro...
15-Sep-15	Program 6H 15 Sep 2015		
15-Oct-15	Progress Updated on 15 Oct 2015		



Remaining Work	Summa...
Actual Work	
Summary Bar	
Critical Remaining Work	
Milestone	

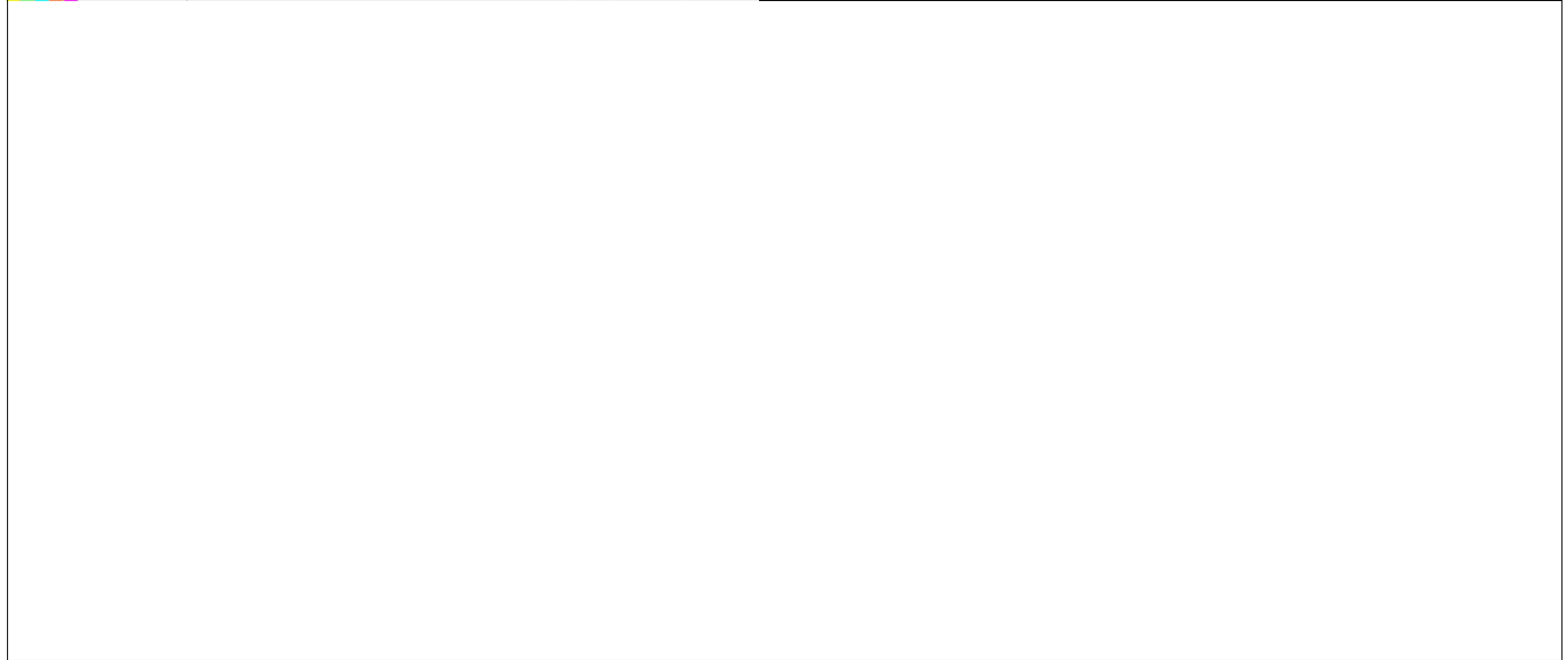
CEDD CONTRACT NO. HK/2009/01

Wan Chai Development Phase II - Central-Wan Chai Bypass at HKCEC (Contract 1)

WORKS PROGRAMME Rev.4 - 3 Month Programme starting from 15-Oct-15

Date	Revision	Checked	Appro...
15-Sep-15	Program 6H 15 Sep 2015		
15-Oct-15	Progress Updated on 15 Oct 2015		

Activity ID	Activity Name	OD	Start	Finish	2015				2016
					Qtr 4				Qtr 1
					Sep	Oct	Nov	Dec	Jan
S4-TS-0005	Pile Head Fabrication	15	11-Jan-16	24-Jan-16					
S4-TS-0010	Bay 21 Base Slab	10	25-Jan-16	03-Feb-16					
S4-TS-0020	Bay 22 Base Slab	10	28-Jan-16	06-Feb-16					
S4-TS-0030	Removal of 2nd and 3rd layer of Strut/Waling	28	07-Feb-16	06-Mar-16					
S4-TS-0040	Bay 21 & 22 Wall	15	07-Mar-16	22-Mar-16					
S4-TS-0050	Bay 21 & 22 Wall & OHVD Base Slab	15	23-Mar-16	06-Apr-16					
S4-TS-0060	Bay 21 & 22 OHVD Wall Stem and Top Slab	15	07-Apr-16	22-Apr-16					



Remaining Work
 Summa...

Actual Work

Summary Bar

Critical Remaining Work

Milestone

CEDD CONTRACT NO. HK/2009/01

Wan Chai Development Phase II - Central-Wan Chai Bypass at HKCEC (Contract 1)

WORKS PROGRAMME Rev.4 - 3 Month Programme starting from 15-Oct-15

Date	Revision	Checked	Appro...
15-Sep-15	Program 6H 15 Sep 2015		
15-Oct-15	Progress Updated on 15 Oct 2015		

Activity ID	Activity Name	emair Juratio	Early Start	Early Finish	Late Start	Late Finish	Total Float	2015												2016					
								October			November				December					January					
								11	18	25	01	08	15	22	29	06	13	20	27	03	10	17	24		
3MRP - Oct 2015 to Jan 2016																									
02 - PRE-CONSTRUCTION WORKS																									
02.3 - Method Statement / Shop Drawings																									
0230-1380	MS Landscape Deck Structure - Submission	23	20-Oct-15	11-Nov-15	08-Oct-16	31-Oct-16	355	MS Landscape Deck Structure - Submission																	
0230-1390	MS Landscape Deck Structure - ER Review & Comment	28	12-Nov-15	09-Dec-15	31-Oct-16	28-Nov-16	355	MS Landscape Deck Structure - ER Review & Comment																	
0230-1400	MS Landscape Deck Structure - Resubmission	28	10-Dec-15	06-Jan-16	28-Nov-16	26-Dec-16	355	MS Landscape Deck Struc																	
0230-1611	MS Noise Semi Enclosure - Submission	6	20-Oct-15	25-Oct-15	13-Jan-16	18-Jan-16	85	MS Noise Semi Enclosure - Submission																	
0230-1612	MS Noise Semi Enclosure - ER Review / Comment	28	26-Oct-15	22-Nov-15	19-Jan-16	15-Feb-16	85	MS Noise Semi Enclosure - ER Review / Comment																	
0230-1613	MS Noise Semi Enclosure - Resubmission	28	23-Nov-15	20-Dec-15	16-Feb-16	14-Mar-16	85	MS Noise Semi Enclosure - Resubmission																	
0230-1614	MS Noise Semi Enclosure - No Adverse Comment	28	21-Dec-15	17-Jan-16	15-Mar-16	11-Apr-16	85	MS Noise S																	
0230-1690	MS Approach Ramp - ER Approval	14	20-Oct-15	02-Nov-15	25-Mar-16	07-Apr-16	157	MS Approach Ramp - ER Approval																	
0230-2330	MS for Connection of EVB and EVA - Submission	10	20-Oct-15	29-Oct-15	10-Nov-15	19-Nov-15	21	MS for Connection of EVB and EVA - Submission																	
0230-2340	MS for Connection of EVB and EVA - ER Review & Comment	12	30-Oct-15	10-Nov-15	20-Nov-15	01-Dec-15	21	MS for Connection of EVB and EVA - ER Review & Comment																	
0230-2350	MS for Connection of EVB and EVA - Resubmission	6	11-Nov-15	16-Nov-15	02-Dec-15	07-Dec-15	21	MS for Connection of EVB and EVA - Resubmission																	
0230-2360	MS for Connection of EVB and EVA - ER No Adverse Comment	10	17-Nov-15	26-Nov-15	08-Dec-15	17-Dec-15	21	MS for Connection of EVB and EVA - ER No Adverse Comment																	
0240-2370	MS for erection of Beams at Pier 17-21 - Submission	28	20-Oct-15	16-Nov-15	01-Jan-16	28-Jan-16	73	MS for erection of Beams at Pier 17-21 - Submission																	
0240-2380	MS for erection of Beams at Pier 17-21 - ER Review / Comment	28	17-Nov-15	14-Dec-15	29-Jan-16	25-Feb-16	73	MS for erection of Beams at Pier 17-21 - ER Review / Comm																	
0240-2390	MS for erection of Beams at Pier 17-21 - Resubmission	28	15-Dec-15	11-Jan-16	26-Feb-16	24-Mar-16	73	MS for erection of B																	
0240-2400	MS for erection of Segment at W/B Bridge by LG - Submission	5	20-Oct-15	24-Oct-15	22-Oct-15	26-Oct-15	2	MS for erection of Segment at W/B Bridge by LG - Submission																	
0240-2410	MS for erection of Segment at W/B Bridge by LG - ER Review / Comment	5	25-Oct-15	29-Oct-15	27-Oct-15	31-Oct-15	2	MS for erection of Segment at W/B Bridge by LG - ER Review / Comment																	
0240-2420	MS for erection of Segment at W/B Bridge by LG - Resubmission	5	30-Oct-15	03-Nov-15	01-Nov-15	05-Nov-15	2	MS for erection of Segment at W/B Bridge by LG - Resubmission																	
0240-2430	MS for erection of Segment at W/B Bridge by LG - No Adverse Comment	5	04-Nov-15	08-Nov-15	06-Nov-15	10-Nov-15	2	MS for erection of Segment at W/B Bridge by LG - No Adverse Comment																	
0240-2440	MS for trial erection of green roof - Submission	15	20-Oct-15	03-Nov-15	08-Mar-16	22-Mar-16	140	MS for trial erection of green roof - Submission																	
0240-2450	MS for for trial erection of green roof - ER Review / Comment	15	04-Nov-15	18-Nov-15	23-Mar-16	06-Apr-16	140	MS for for trial erection of green roof - ER Review / Comment																	
0240-2460	MS for for trial erection of green roof - Resubmission	15	19-Nov-15	03-Dec-15	07-Apr-16	21-Apr-16	140	MS for for trial erection of green roof - Resubmission																	
0240-2470	MS for for trial erection of green roof - No Adverse Comment	15	04-Dec-15	18-Dec-15	22-Apr-16	06-May-16	140	MS for for trial erection of green roof - No Adverse Co																	
02.4 - Contractor's Design and Build Items																									
0240-1180	HGHK Permanent Carpark Design - ER/HGHK Review and Comment	15	20-Oct-15	03-Nov-15	30-Oct-15	13-Nov-15	10	HGHK Permanent Carpark Design - ER/HGHK Review and Comment																	
0240-1190	HGHK Permanent Carpark Design - Resubmission	50	04-Nov-15	23-Dec-15	14-Nov-15	02-Jan-16	10	HGHK Permanent Carpark Design - Resubmis																	
0240-1270	Landscaping Design - Submission	28	20-Oct-15	16-Nov-15	12-Oct-17	08-Nov-17	723	Landscaping Design - Submission																	
0240-1280	Landscaping Design - ER Review/Resubmission	28	17-Nov-15	14-Dec-15	09-Nov-17	06-Dec-17	723	Landscaping Design - ER Review/Resubmission																	
0240-1290	Landscaping Design - ER Approval	28	15-Dec-15	11-Jan-16	07-Dec-17	03-Jan-18	723	Landscaping Desig																	
0240-1630	Green Wall Minimum 2 years Establishment	488	20-Oct-15	03-Jun-17	18-Nov-16	05-Jul-18	326																		
02.5 - Bridge Segment/Beam Off-site Precasting																									
0250-3580	Bridge F1C Pier 36 T-span Segment Off-site Casting (13 nos.)	12	20-Oct-15	04-Nov-15	19-Jan-16	02-Feb-16	76	Bridge F1C Pier 36 T-span Segment Off-site Casting (13 nos.)																	
0250-3720	Bridge F3C Pier 41 T-span Segment Off-site Casting (13 nos.)	15	20-Oct-15	06-Nov-15	22-Mar-16	11-Apr-16	126	Bridge F3C Pier 41 T-span Segment Off-site Casting (13 nos.)																	
0250-3740	Bridge F3C Pier 42 T-span Segment Off-site Casting (11 nos.)	3	20-Oct-15	23-Oct-15	26-Apr-16	28-Apr-16	153	Bridge F3C Pier 42 T-span Segment Off-site Casting (11 nos.)																	
0250-3760	Bridge F3C Pier 40 End-span Segment Off-site Casting (5 nos.)	0	20-Oct-15	20-Oct-15	25-Apr-16	25-Apr-16		e F3C Pier 40 End-span Segment Off-site Casting (5 nos.)																	
0250-3860	Bridge F1B2 - Abut D12 Segment - 6 nos. (S2)	19	23-Oct-15	14-Nov-15	07-Nov-16	28-Nov-16	312	Bridge F1B2 - Abut D12 Segment - 6 nos. (S2)																	
0250-3880	Bridge F1B2 - Pier F1B2 Segment - 13 nos. (S1)	40	20-Oct-15	05-Dec-15	24-Dec-16	10-Feb-17	356	Bridge F1B2 - Pier F1B2 Segment - 13 nos. (S1)																	
0250-3900	Bridge F1B2 - Pier F2B2 Segment - 11 nos. (S1)	28	14-Dec-15	16-Jan-16	18-Feb-17	22-Mar-17	356	Bridge F1B2																	
0250-3920	Bridge F1B2 - Pier F3B2 Segment - 6 nos. (S2)	19	21-Nov-15	14-Dec-15	06-Dec-16	27-Dec-16	312	Bridge F1B2 - Pier F3B2 Segment - 6 nos. (S2)																	
0250-3940	Bridge F2B - Pier F3B2 Segment - 5 nos. (S2)	16	21-Dec-15	11-Jan-16	04-Jan-17	21-Jan-17	312	Bridge F2B - Pier F3																	

- Remaining Level of Effort
- Actual Level of Effort
- Actual Work
- Remaining Work
- Critical Remaining Work

Contract HY/2009/19
Three Months Rolling Programme (20 Oct 2015 to 19 Jan 2016)

Activity ID	Activity Name	emairir Juratio	Early Start	Early Finish	Late Start	Late Finish	Total Float	2015												2016			
								October			November				December					January			
								11	18	25	01	08	15	22	29	06	13	20	27	03	10	17	24
02.6 - Fabrication & Delivery of Noise Enclosure																							
0260-5000	Int. Noise Enclosure Main + Sub Frames Fab / Del	68	20-Oct-15	09-Jan-16	16-Jan-16	11-Apr-16	74													Int. Noise Enclosure M			
0260-5010	Int. Noise Enclosure Noise Panel Fab / Del	10	20-Oct-15	31-Oct-15	30-Mar-16	11-Apr-16	131													Int. Noise Enclosure Noise Panel Fab / Del			
03 - PRELIMINARY WORKS																							
03.3 - Interface Works																							
0261-1000	Constr. of DN75 Storm Drain (Oil street) - ELS and Excavation	0	20-Oct-15	20-Oct-15	23-Oct-15	23-Oct-15														Storm Drain (Oil street) - ELS and Excavation			
0261-1010	Constr. of DN75 Storm Drain (Oil street) - Casting of Blinding Layer	0	20-Oct-15	20-Oct-15	23-Oct-15	23-Oct-15														Storm Drain (Oil street) - Casting of Blinding Layer			
0261-1020	Constr. of DN75 Storm Drain (Oil street) - Pipe Laying + Air test	0	20-Oct-15	20-Oct-15	23-Oct-15	23-Oct-15														of DN75 Storm Drain (Oil street) - Pipe Laying + Air test			
0261-1030	Constr. of DN75 Storm Drain (Oil street) - Constr. of Manhole 1-56 (Lower portion)	0	20-Oct-15	20-Oct-15	23-Oct-15	23-Oct-15														onstr. of DN75 Storm Drain (Oil street) - Constr. of Manhole 1-56 (Lower portion)			
0261-1040	Constr. of DN75 Storm Drain (Oil street) - Constr. of Manhole 1-56 (Upper portion)	0	20-Oct-15	20-Oct-15	23-Oct-15	23-Oct-15														Constr. of DN75 Storm Drain (Oil street) - Constr. of Manhole 1-56 (Upper portion)			
0261-1050	Constr. of DN75 Storm Drain (Oil street) - Concreting Pipeline intersection	0	20-Oct-15	20-Oct-15	23-Oct-15	23-Oct-15														Constr. of DN75 Storm Drain (Oil street) - Concreting Pipeline intersection			
0261-1060	Constr. of DN75 Storm Drain (Oil street) - Trench Backfilling	0	20-Oct-15	20-Oct-15	23-Oct-15	23-Oct-15														Constr. of DN75 Storm Drain (Oil street) - Trench Backfilling			
0261-1070	Constr. of DN75 Storm Drain (Oil street) - Removing ELS	2	20-Oct-15	22-Oct-15	23-Oct-15	24-Oct-15	2													Constr. of DN75 Storm Drain (Oil street) - Removing ELS			
0261-1080	Constr. of DN75 Storm Drain (Oil street) - Pavement Reinstatement	3	23-Oct-15	26-Oct-15	26-Oct-15	28-Oct-15	2													Constr. of DN75 Storm Drain (Oil street) - Pavement Reinstatement			
0261-1090	Complete Drainage work at Oil Street	0		28-Oct-15		28-Oct-15	0													Complete Drainage work at Oil Street			
05 - SECTION 2 & 2A OF THE WORKS																							
05.1 - Cut & Cover Tunnel Ch 4855-4932 (APS Footprint)																							
05.1.3 - APS & Tunnel Structure																							
0513-3060	APS Basement (Bay 21-South) - Staircase Landing 8 > Staircase Landing 12	20	20-Oct-15	12-Nov-15	20-Oct-15	12-Nov-15	0													APS Basement (Bay 21-South) - Staircase Landing 8 > Staircase Landing 12			
0513-3080	Tunnel Level - South Side Additional Beam at Bay 21	5	07-Nov-15	12-Nov-15	07-Nov-15	12-Nov-15	0													Tunnel Level - South Side Additional Beam at Bay 21			
0513-3081	Remedial Works - Concrete defect on partition wall	0	20-Oct-15	20-Oct-15	16-Nov-15	16-Nov-15														Remedial Works - Concrete defect on partition wall			
0513-3082	Remedial Works - Panel installation	3	13-Nov-15	16-Nov-15	13-Nov-15	16-Nov-15	0													Remedial Works - Panel installation			
0513-3083	Remedial Works - Trapped gullies	0	20-Oct-15	20-Oct-15	16-Nov-15	16-Nov-15														Remedial Works - Trapped gullies			
0513-3084	Remedial Works - Water seepage on soffit, diaphragm wall and floor slab	0	20-Oct-15	20-Oct-15	16-Nov-15	16-Nov-15														Remedial Works - Water seepage on soffit, diaphragm wall and floor slab			
0513-3085	Remedial Works - Concrete defect on completed staircase	3	20-Oct-15	23-Oct-15	13-Nov-15	16-Nov-15	20													Remedial Works - Concrete defect on completed staircase			
0513-3086	Remedial Works - Cleaning of 150mm & 50mm dia. Cross rd. ducts & Pipes	0	20-Oct-15	20-Oct-15	16-Nov-15	16-Nov-15														Remedial Works - Cleaning of 150mm & 50mm dia. Cross rd. ducts & Pipes			
0513-3087	Remedial Works - Concrete defect on walls and slabs at pump sump E & Tunnel	0	20-Oct-15	20-Oct-15	16-Nov-15	16-Nov-15														Remedial Works - Concrete defect on walls and slabs at pump sump E & Tunnel			
0513-3580	Completion of Outstanding Works at APS & Tunnel	0		16-Nov-15		16-Nov-15	0													Completion of Outstanding Works at APS & Tunnel			
05.1.5 - EVB Sub-structure & Tunnel																							
0515-1120	EVB Basement - Col/Partition Wall (Reb. Fix) > Zone 1A : GL1-2/A-E, 2-3/B-E, 3-6/C-F, 4-6/F-J	4	20-Oct-15	24-Oct-15	20-Oct-15	24-Oct-15	0													EVB Basement - Col/Partition Wall (Reb. Fix) > Zone 1A : GL1-2/A-E, 2-3/B-E, 3-6/C-F, 4-6/F-J			
0515-1140	EVB Basement - Col/Partition Wall (Fwk) > Zone 1A to Mezz (-1.40) Soffit	7	20-Oct-15	28-Oct-15	20-Oct-15	28-Oct-15	0													EVB Basement - Col/Partition Wall (Fwk) > Zone 1A to Mezz (-1.40) Soffit			
0515-1160	EVB Basement - Col/Partition Wall (Conc) > Zone 1A to Mezz (-1.40) Soffit	2	29-Oct-15	30-Oct-15	13-Nov-15	14-Nov-15	13													EVB Basement - Col/Partition Wall (Conc) > Zone 1A to Mezz (-1.40) Soffit			
0515-1180	EVB Basement - Mezz Slab & Beam (Lv -1.4) - (Falsework/Fwk) > Zone 1A	10	20-Oct-15	31-Oct-15	04-Nov-15	14-Nov-15	12													EVB Basement - Mezz Slab & Beam (Lv -1.4) - (Falsework/Fwk) > Zone 1A			
0515-1200	EVB Basement - Mezz Slab & Beam (Lv -1.4) - (Reb. Fix) > Zone 1A	6	02-Nov-15	07-Nov-15	16-Nov-15	21-Nov-15	12													EVB Basement - Mezz Slab & Beam (Lv -1.4) - (Reb. Fix) > Zone 1A			
0515-1220	EVB Basement - Mezz Slab & Beam (Lv -1.4) - (Conc) > Zone 1A	2	09-Nov-15	10-Nov-15	23-Nov-15	24-Nov-15	12													EVB Basement - Mezz Slab & Beam (Lv -1.4) - (Conc) > Zone 1A			
0515-1240	EVB Basement - Col/Partition Wall (Reb. Fix) > Zone 2A : GL1-6/A-D (incl ST-04)	8	20-Oct-15	29-Oct-15	23-Oct-15	31-Oct-15	2													EVB Basement - Col/Partition Wall (Reb. Fix) > Zone 2A : GL1-6/A-D (incl ST-04)			
0515-1260	EVB Basement - Col/Partition Wall (Fwk) > Zone 2A to Roof Soffit	12	29-Oct-15	11-Nov-15	29-Oct-15	11-Nov-15	0													EVB Basement - Col/Partition Wall (Fwk) > Zone 2A to Roof Soffit			
0515-1280	EVB Basement - Col/Partition Wall (Conc) > Zone 2A to Roof Soffit	2	12-Nov-15	13-Nov-15	12-Nov-15	13-Nov-15	0													EVB Basement - Col/Partition Wall (Conc) > Zone 2A to Roof Soffit			
0515-1300	EVB Basement - Mezz Slab & Beam (Lv +2.65) - (Falsework/Fwk) > Zone 2A	6	14-Nov-15	20-Nov-15	14-Nov-15	20-Nov-15	0													EVB Basement - Mezz Slab & Beam (Lv +2.65) - (Falsework/Fwk) > Zone 2A			
0515-1320	EVB Basement - Mezz Slab & Beam (Lv +2.65) - (Reb. Fix) > Zone 2A	3	21-Nov-15	24-Nov-15	21-Nov-15	24-Nov-15	0													EVB Basement - Mezz Slab & Beam (Lv +2.65) - (Reb. Fix) > Zone 2A			
0515-1340	EVB Basement - Mezz Slab & Beam (Lv +2.65) - (Conc) > Zone 2A	1	25-Nov-15	25-Nov-15	25-Nov-15	25-Nov-15	0													EVB Basement - Mezz Slab & Beam (Lv +2.65) - (Conc) > Zone 2A			
0515-1360	EVB Basement - Col/Partition Wall (Reb. Fix) > Zone 3A : GL1-6/E-H	4	20-Oct-15	24-Oct-15	23-Oct-15	27-Oct-15	2													EVB Basement - Col/Partition Wall (Reb. Fix) > Zone 3A : GL1-6/E-H			
0515-1380	EVB Basement - Col/Partition Wall (Fwk) > Zone 3A to Roof Soffit	8	26-Oct-15	03-Nov-15	28-Oct-15	05-Nov-15	2													EVB Basement - Col/Partition Wall (Fwk) > Zone 3A to Roof Soffit			

- Remaining Level of Effort
- Actual Level of Effort
- Actual Work
- Remaining Work
- Critical Remaining Work
- Milestone

Contract HY/2009/19
Three Months Rolling Programme (20 Oct 2015 to 19 Jan 2016)

Activity ID	Activity Name	emairir Duration	Early Start	Early Finish	Late Start	Late Finish	Total Float	2015												2016			
								October			November				December					January			
								11	18	25	01	08	15	22	29	06	13	20	27	03	10	17	24
0700-1130	Grd. Beam - (GL > F-G) - Tie Beam Construction	0	20-Oct-15	20-Oct-15	20-Oct-15	20-Oct-15	1	Grd. Beam - (GL > F-G) - Tie Beam Construction															
0700-1140	Grd. Beam - (GL > F-G) - Backfill	3	20-Oct-15	23-Oct-15	22-Oct-15	24-Oct-15	1	Grd. Beam - (GL > F-G) - Backfill															
0700-1150	Grd. Beam - (GL > F-G) - (Part A) - Blinding Layer Casting	1	24-Oct-15	24-Oct-15	26-Oct-15	26-Oct-15	1	Grd. Beam - (GL > F-G) - (Part A) - Blinding Layer Casting															
0700-1160	Grd. Beam - (GL > F-G) - (Part A) - H-Pile Trimming / Cutting Casing	1	26-Oct-15	26-Oct-15	27-Oct-15	27-Oct-15	1	Grd. Beam - (GL > F-G) - (Part A) - H-Pile Trimming / Cutting Casing															
0700-1170	Grd. Beam - (GL > F-G) - (Part A) - Capping Plate Welding / U Bars Welding	1	27-Oct-15	27-Oct-15	28-Oct-15	28-Oct-15	1	Grd. Beam - (GL > F-G) - (Part A) - Capping Plate Welding / U Bars Welding															
0700-1180	Grd. Beam - (GL > F-G) - (Part A) - Reinforcement Fixing	3	28-Oct-15	30-Oct-15	29-Oct-15	31-Oct-15	1	Grd. Beam - (GL > F-G) - (Part A) - Reinforcement Fixing															
0700-1190	Grd. Beam - (GL > F-G) - (Part A) - Formworks Erection	2	31-Oct-15	02-Nov-15	02-Nov-15	03-Nov-15	1	Grd. Beam - (GL > F-G) - (Part A) - Formworks Erection															
0700-1200	Grd. Beam - (GL > F-G) - (Part A) - Concreting	1	03-Nov-15	03-Nov-15	04-Nov-15	04-Nov-15	1	Grd. Beam - (GL > F-G) - (Part A) - Concreting															
0700-1210	Grd. Beam - (GL > F-G) - (Part A) - Formwork Removal	1	04-Nov-15	04-Nov-15	05-Nov-15	05-Nov-15	1	Grd. Beam - (GL > F-G) - (Part A) - Formwork Removal															
0700-1220	Grd. Beam - (GL > F-G) - (Part B) - Blinding Layer Casting	0	20-Oct-15	20-Oct-15	29-Oct-15	29-Oct-15		Beam - (GL > F-G) - (Part B) - Blinding Layer Casting															
0700-1230	Grd. Beam - (GL > F-G) - (Part B) - H-Pile Trimming / Cutting Casing	0	20-Oct-15	20-Oct-15	29-Oct-15	29-Oct-15		Grd. Beam - (GL > F-G) - (Part B) - H-Pile Trimming / Cutting Casing															
0700-1240	Grd. Beam - (GL > F-G) - (Part B) - Capping Plate Welding / U Bars Welding	0	20-Oct-15	20-Oct-15	29-Oct-15	29-Oct-15		Grd. Beam - (GL > F-G) - (Part B) - Capping Plate Welding / U Bars Welding															
0700-1250	Grd. Beam - (GL > F-G) - (Part B) - Reinforcement Fixing	0	20-Oct-15	20-Oct-15	29-Oct-15	29-Oct-15		Grd. Beam - (GL > F-G) - (Part B) - Reinforcement Fixing															
0700-1260	Grd. Beam - (GL > F-G) - (Part B) - Formworks Erection	2	20-Oct-15	22-Oct-15	29-Oct-15	30-Oct-15	7	Grd. Beam - (GL > F-G) - (Part B) - Formworks Erection															
0700-1270	Grd. Beam - (GL > F-G) - (Part B) - Concreting	1	23-Oct-15	23-Oct-15	31-Oct-15	31-Oct-15	7	Grd. Beam - (GL > F-G) - (Part B) - Concreting															
0700-1280	Grd. Beam - (GL > F-G) - (Part B) - Formwork Removal	1	24-Oct-15	24-Oct-15	02-Nov-15	02-Nov-15	7	Grd. Beam - (GL > F-G) - (Part B) - Formwork Removal															
0700-1290	Grd. Beam - (GL > K-L) - Backfill	0	20-Oct-15	20-Oct-15	27-Oct-15	27-Oct-15		Beam - (GL > K-L) - Backfill															
0700-1300	Grd. Beam - (GL > K-L) - Removal of existing Sheet Pile	0	20-Oct-15	20-Oct-15	27-Oct-15	27-Oct-15		Beam - (GL > K-L) - Removal of existing Sheet Pile															
0700-1310	Grd. Beam - (GL > K-L) - Blinding Layer Casting	0	20-Oct-15	20-Oct-15	27-Oct-15	27-Oct-15		Beam - (GL > K-L) - Blinding Layer Casting															
0700-1320	Grd. Beam - (GL > K-L) - H-Pile Trimming / Cutting Casing	0	20-Oct-15	20-Oct-15	27-Oct-15	27-Oct-15		Grd. Beam - (GL > K-L) - H-Pile Trimming / Cutting Casing															
0700-1330	Grd. Beam - (GL > K-L) - Capping Plate Welding / U Bars Welding	0	20-Oct-15	20-Oct-15	27-Oct-15	27-Oct-15		Grd. Beam - (GL > K-L) - Capping Plate Welding / U Bars Welding															
0700-1340	Grd. Beam - (GL > K-L) - Reinforcement Fixing	1	20-Oct-15	20-Oct-15	27-Oct-15	27-Oct-15	5	Grd. Beam - (GL > K-L) - Reinforcement Fixing															
0700-1350	Grd. Beam - (GL > K-L) - Formworks Erection	3	22-Oct-15	24-Oct-15	28-Oct-15	30-Oct-15	5	Grd. Beam - (GL > K-L) - Formworks Erection															
0700-1360	Grd. Beam - (GL > K-L) - Concreting	1	26-Oct-15	26-Oct-15	31-Oct-15	31-Oct-15	5	Grd. Beam - (GL > K-L) - Concreting															
0700-1370	Grd. Beam - (GL > K-L) - Formwork Removal	1	27-Oct-15	27-Oct-15	02-Nov-15	02-Nov-15	5	Grd. Beam - (GL > K-L) - Formwork Removal															
0700-1380	Storm Water Drain at Portion VB	5	21-Nov-15	26-Nov-15	02-Dec-15	07-Dec-15	9	Storm Water Drain at Portion VB															
0700-1390	Install Irrigation Watermain within Portion V	5	21-Nov-15	26-Nov-15	08-Dec-15	12-Dec-15	14	Install Irrigation Watermain within Portion V															
0700-1400	Construction of pile cap for PC21	0	20-Oct-15	20-Oct-15	24-Dec-16	24-Dec-16		Construction of pile cap for PC21															
0700-1410	Construction of pile cap for PC22	0	20-Oct-15	20-Oct-15	24-Dec-16	24-Dec-16		Construction of pile cap for PC22															
0700-1420	Construction of Column for Landscape Dect at PC21 & 22 up to Gnd Level	18	10-Nov-15	30-Nov-15	24-Dec-16	13-Jan-17	339	Construction of Column for Landscape Dect at PC21 & 22 up to Gnd Level															
0700-1430	Install underground drainage at Portion VB	7	21-Nov-15	28-Nov-15	30-Nov-15	07-Dec-15	7	Install underground drainage at Portion VB															
0700-1440	Construct Road Pavement Between P31-32 within Porion VB incl sub-base	21	04-Dec-15	29-Dec-15	08-Dec-15	02-Jan-16	3	Construct Road Pavement Between P31-32 within Porion VB incl sub-base															
0700-1450	Remove Temp Container/Storage within Admin Area	9	30-Nov-15	09-Dec-15	22-Dec-15	02-Jan-16	19	Remove Temp Container/Storage within Admin Area															
0700-1460	Erect Temporary/Removable Hoarding along portion VB	9	30-Dec-15	09-Jan-16	04-Jan-16	13-Jan-16	3	Erect Temporary/Removable Hoarding along portion VB															
A1540	Modify Temporary Support of Pier obstructing construction of ADB along Portion VB	25	05-Nov-15	03-Dec-15	11-Oct-19	08-Nov-19	1179	Modify Temporary Support of Pier obstructing construction of ADB along Portion VB															
08 - SECTION 5 WORK																							
08.1 - Retaining Wall 'F' Substructure																							
0810-1650	Retaining Wall F > Temp Excav Support/Open cut Excav works	18	20-Oct-15	10-Nov-15	08-Jun-16	29-Jun-16	190	Retaining Wall F > Temp Excav Support/Open cut Excav works															
0810-1660	Retaining Wall F > Excavation Works for Pile caps	21	28-Oct-15	20-Nov-15	16-Jun-16	11-Jul-16	190	Retaining Wall F > Excavation Works for Pile caps															
0810-1670	Construction of pile cap for Retaining Wall F @ PC8	21	30-Oct-15	23-Nov-15	18-Jun-16	13-Jul-16	190	Construction of pile cap for Retaining Wall F @ PC8															
0810-1680	Construction of pile cap for Retaining Wall F @ PC9	0	09-Nov-15	09-Nov-15	28-Jun-16	28-Jun-16		Construction of pile cap for Retaining Wall F @ PC9															
0810-1700	Construction of pile cap for Retaining Wall F @ PC10	0	09-Nov-15	09-Nov-15	28-Jun-16	28-Jun-16		Construction of pile cap for Retaining Wall F @ PC10															
0810-1720	Construction of pile cap for Retaining Wall F @ PC11	0	09-Nov-15	09-Nov-15	28-Jun-16	28-Jun-16		Construction of pile cap for Retaining Wall F @ PC11															

- Remaining Level of Effort ◆ ◆ Milestone
- Actual Level of Effort
- Actual Work
- Remaining Work
- Critical Remaining Work

Contract HY/2009/19
Three Months Rolling Programme (20 Oct 2015 to 19 Jan 2016)

Activity ID	Activity Name	emainir Duratio	Early Start	Early Finish	Late Start	Late Finish	Total Float	2015												2016			
								October			November						December			January			
								11	18	25	01	08	15	22	29	06	13	20	27	03	10	17	24
10.7.1 - TTM Stages																							
1071-1240	TTM Stage 5 - TMLG Consultation and Endorsement	37	20-Oct-15	25-Nov-15	21-Oct-15	26-Nov-15	1	TTM Stage 5 - TMLG Consultation and Endorsement															
1071-1260	TTM Stage 5 - TTM Enabling Works	1	26-Nov-15	26-Nov-15	27-Nov-15	27-Nov-15	1	TTM Stage 5 - TTM Enabling Works															
1071-1280	TTM Stage 5 - Hing Fat Slip Road Divert 1 Lane through 'Bridge From Pier E4 to Pier E2' to Release "TA2"	0		26-Nov-15		27-Nov-15	1	TTM Stage 5 - Hing Fat Slip Road Divert 1 Lane through 'Bridge From Pier E4 to Pier															
11 - SECTION 11 OF THE WORKS																							
11.2 - Roadworks																							
1110-2710	Watermains at Portion XIIA - Stage 3 (parking Meters)	0	20-Oct-15	20-Oct-15	16-Nov-15	16-Nov-15		Watermains at Portion XIIA - Stage 3 (parking Meters)															
1110-2720	Watermains at Portion XIIA - Stage 4 (parking Meters)	0	20-Oct-15	20-Oct-15	16-Nov-15	16-Nov-15		Watermains at Portion XIIA - Stage 4 (parking Meters)															
1110-2730	Watermains at Portion XIIA - Stage 5 (parking Meters)	3	20-Oct-15	23-Oct-15	16-Nov-15	18-Nov-15	22	Watermains at Portion XIIA - Stage 5 (parking Meters)															
1110-2740	Watermains at Portion XIIA - Stage 6 (King Ming Rd. junction)	0	20-Oct-15	20-Oct-15	17-Nov-15	17-Nov-15		Watermains at Portion XIIA - Stage 6 (King Ming Rd. junction)															
1110-2750	Watermains at Portion XIIA - Stage 7 (King Ming Rd. junction & connection pt.)	0	20-Oct-15	20-Oct-15	17-Nov-15	17-Nov-15		Watermains at Portion XIIA - Stage 7 (King Ming Rd. junction & connection pt.)															
1110-2760	Watermains at Portion XIIA - Stage 8 (Run-in/out to carpark at Victoria Ctr.)	2	22-Oct-15	23-Oct-15	17-Nov-15	18-Nov-15	22	Watermains at Portion XIIA - Stage 8 (Run-in/out to carpark at Victoria Ctr.)															
1110-2770	Watermains at Portion XIIA - Stage 9 (Run-in/out to carpark at Victoria Ctr.)	13	24-Oct-15	07-Nov-15	19-Nov-15	03-Dec-15	22	Watermains at Portion XIIA - Stage 9 (Run-in/out to carpark at Victoria Ctr.)															
1110-2780	Watermains at Portion XIIA - Stage 10 (motor cycle parking)	13	24-Oct-15	07-Nov-15	19-Nov-15	03-Dec-15	22	Watermains at Portion XIIA - Stage 10 (motor cycle parking)															
1110-2790	Watermains at Portion XIIA - Stage 11 (motor cycle parking)	12	09-Nov-15	21-Nov-15	04-Dec-15	17-Dec-15	22	Watermains at Portion XIIA - Stage 11 (motor cycle parking)															
1110-2800	Watermains at Portion XIIA - Testing & commissioning of Watermains	4	23-Nov-15	26-Nov-15	18-Dec-15	22-Dec-15	22	Watermains at Portion XIIA - Testing & commissioning of Watermains															
1110-2810	Watermains at Portion XIIA - Reinstatement of Pavement at connection Pt.	4	27-Nov-15	01-Dec-15	23-Dec-15	28-Dec-15	22	Watermains at Portion XIIA - Reinstatement of Pavement at connection Pt.															

- █ Remaining Level of Effort
- █ Actual Level of Effort
- █ Actual Work
- █ Remaining Work
- █ Critical Remaining Work
- ◆ Milestone

Contract HY/2009/19
Three Months Rolling Programme (20 Oct 2015 to 19 Jan 2016)

Activity ID	Activity Name	Calendar	Original Duration	Start	Finish	Total Float	2015				2016		
							Q4	Q1	Q2	Q3	Q4	Q1	Q2
HY/2009/15 - Works Programme Rev. M (DD:20-Sep-12)													
Works in East Ventilation Adit - Based on Alternative Method													
Reinstatement of Breakwater													
S3_54840	Reinstatement works -west side	7d/wk-1	60d	21-Feb-14 08 A	30-Sep-14 18	-85d							
S3_60085	Reinstatement works east side	7d/wk-1	60d	31-May-14 08 A	30-Sep-14 18	-85d							
S3_54845	Completion of Section 3 (KD8) in EVA Area (Alternative Method)	7d/wk-2	0d		30-Sep-14 18	-86d							
Works in TS1/TS2 - OHVD and Cable Trough/Maintenance Walkway													
TS2 - OHVD and Cable Trough/Maintenance Walkway													
OHVD Slab and Cable Trough Construction													
S3_6210	TS2 - OHVD/ Cable trough	7d/wk-1	40d	20-May-14 08 A	30-Sep-14 18	-85d							
S3_6212	Completion of Section 3 - TS1/TS2 Area (below -6mpd) KD8)	7d/wk-2	0d		30-Sep-14 18	-86d							
Works in TS4/ME4 Area (Portion 14A, 14B, 15, 23)													
TS4/ME4 - Removal of Temporary Reclamation													
Remaining Works at TZ6													
Stage 4 - Seawall and Reclamation at TZ6													
A-2010	Installation of seawall blocks (Qty: 245 nos.)	7d/wk-2	6d	15-Sep-14 08 A	26-Sep-14 18	-332d							
A-2020	Soil Backfilling up to -2.45mPD (Qty:3,000 cu.m.)	7d/wk-2	2d	25-Sep-14 08	26-Sep-14 18	-332d							
A-2030	Utilities installation for Mined Tunnel	7d/wk-2	1d	27-Sep-14 08	27-Sep-14 18	-332d							
A-2040	Soil backfilling up to ground level (Qty:2,000 cu.m.)	7d/wk-2	2d	28-Sep-14 08	29-Sep-14 18	-332d							
A-2050	Site clearance	7d/wk-2	1d	30-Sep-14 08	30-Sep-14 18	-305d							
A-2060	Handover to MTR	7d/wk-2	0d		30-Sep-14 18	-305d							
Removal of Temporary Reclamation at TS4/ME4													
Stage 5 (Zones A, D & F - TS4-D33 to D-26, SCL2 & ME4-D19 to D13)													
A-3000	D-Wall horizontal cutting (Qty: 62 pcs.)	7d/wk-2	21d	29-Aug-14 08 A	23-Sep-14 18	-340d							
Stage 6 (Zone C - P4, ME4-D12 to ME4-D16 & P3)													
A-3011	Marine removal of temporary reclamation and seawall blocks (Zones C)	7d/wk-2	21d	31-Aug-14 08 A	02-Oct-14 18	-353d							
A-3030	D-Wall vertical cutting (Qty: 15 pcs.)	7d/wk-2	4d	03-Oct-14 08	06-Oct-14 18	-353d							
A-3040	D-Wall horizontal cutting (Qty: 20 pcs.)	7d/wk-2	5d	06-Oct-14 08	10-Oct-14 18	-352d							

1 of 18

- Summary Bar
- Actual Level of Effort
- Actual Work
- Remaining Work
- Critical Remaining Work
- Milestone

China State Construction Engineering (Hong Kong) Ltd

Contract No. HY/2009/15 - Central Wan Chai By Pass - Tunnel (Causeway Bay Typhoon Shelter Section)

WORKS PROGRAMME REV. M

Prepared by William Caluza			
Date	Revision	Checked	Approved
26-Sep...	1st submission		

中國建築工程(香港)有限公司
CHINA STATE CONSTRUCTION ENGINEERING (HONG KONG) LTD.

Activity ID	Activity Name	Calendar	Original Duration	Start	Finish	Total Float	2015				2016				
							Q4	Q1	Q2	Q3	Q4	Q1	Q2	Q3	
Stage 7 (Zones C & E - ME4-D06 to D01, SCL1 & TS4-D25)															
A-4000	Marine removal of temporary reclamation and seawall blocks (Zones C & E)	7d/wk-2	18d	06-Sep-14 08 A	06-Oct-14 18	-353d									
A-3090	Hole coring (Qty: 44 nos)	7d/wk-2	9d	20-Sep-14 08*	28-Sep-14 18	-346d									
A-4010	D-Wall vertical cutting (Qty: 27pcs.)	7d/wk-2	7d	07-Oct-14 08	13-Oct-14 18	-353d									
A-4020	D-Wall horizontal cutting (Qty: 37 pcs.)	7d/wk-2	10d	11-Oct-14 08	20-Oct-14 18	-353d									
Stage 9 (Zone I - TS4-D01 to TS4-D08)															
A-3050	Remaining removal of temporary reclamation (Zone I)	7d/wk-2	28d	29-Aug-14 08 A	01-Oct-14 18	-342d									
A-3060	Hole coring (Qty: 25 nos)	7d/wk-2	5d	02-Oct-14 08	06-Oct-14 18	-342d									
A-3070	D-Wall vertical cutting (Qty: 14 pcs.)	7d/wk-2	3d	07-Oct-14 08	09-Oct-14 18	-342d									
A-3080	D-Wall horizontal cutting (Qty: 24 pcs.)	7d/wk-2	5d	21-Oct-14 08	25-Oct-14 18	-353d									
Stage 8 (Zones G & K - TS4-D24 to TS4-D15)															
A-4040	Relocation of RHKYC floating pontoon	7d/wk-2	5d	22-Sep-14 08*	26-Sep-14 18	-338d									
A-4050	Hole coring (Qty: 27 nos)	7d/wk-2	6d	29-Sep-14 08	04-Oct-14 18	-346d									
A-4060	Marine removal of temporary reclamation and seawall blocks (Zone G & K)	7d/wk-2	14d	11-Oct-14 08	24-Oct-14 18	-352d									
A-4070	D-Wall vertical cutting (Qty: 18pcs.)	7d/wk-2	4d	25-Oct-14 08	28-Oct-14 18	-352d									
A-4080	D-Wall horizontal cutting (Qty: 25 pcs.)	7d/wk-2	7d	26-Oct-14 08	01-Nov-14 18	-352d									
Stage 10 (Zone J - TS4-D09 to TS4-D14)															
A-4090	Land removal of temporary reclamation (Zone J)	7d/wk-2	10d	07-Oct-14 08	16-Oct-14 18	-344d									
A-5000	Hole coring (Qty: 32 nos)	7d/wk-2	7d	17-Oct-14 08	23-Oct-14 18	-340d									
A-5010	Marine removal of temporary reclamation (Zone J)	7d/wk-2	7d	26-Oct-14 08	01-Nov-14 18	-353d									
A-5020	D-Wall vertical cutting (Qty: 20 pcs.)	7d/wk-2	5d	02-Nov-14 08	06-Nov-14 18	-353d									
A-5030	D-Wall horizontal cutting (Qty: 26 pcs.)	7d/wk-2	7d	04-Nov-14 08	10-Nov-14 18*	-353d									
Stage 13 - Phase 3 Mooring															
A-5050	Final trimming of sea bed level	7d/wk-2	4d	02-Nov-14 08	05-Nov-14 18	-347d									
A-5060	Phase 3 Mooring	7d/wk-2	6d	06-Nov-14 08	11-Nov-14 18	-347d									
A-5040	Reinstatement of existing seawall (Zones I & J)	7d/wk-2	7d	11-Nov-14 08	17-Nov-14 18	-353d									
Stage 12 - Re-provisioning of Jetty															
S6_5258	Provision of Mobile Crane (until permanent re-provision of Jetty is completed)	7d/wk-1	160d	20-Feb-14 08 A	30-Dec-14 18	-335d									
A-6010	BA8 submission and consent for commencement of superstructure	7d/wk-2	28d	20-Sep-14 08 A	16-Oct-14 18	-336d									

-  Summary Bar
-  Actual Level of Effort
-  Actual Work
-  Remaining Work
-  Critical Remaining Work
-  Milestone

2 of 18

China State Construction Engineering (Hong Kong) Ltd

Contract No. HY/2009/15 - Central Wan Chai By Pass - Tunnel (Causeway Bay Typhoon Shelter Section)

WORKS PROGRAMME REV. M

Prepared by William Caluza			
Date	Revision	Checked	Approved
26-Sep...	1st submission		



中國建築工程(香港)有限公司
CHINA STATE CONSTRUCTION ENGINEERING (HONG KONG) LTD.

Activity ID	Activity Name	Calendar	Original Duration	Start	Finish	Total Float	2015				2016							
							Q4	Q1	Q2	Q3	Q4	Q1	Q2	Q3				
A-6012	Submission of performance report	7d/wk-2	1d	25-Oct-14 08*	25-Oct-14 18	-286d												
A-6020	Erection of working platform for jetty beams and reinstate the floating portoon	7d/wk-2	10d	02-Nov-14 08	11-Nov-14 18	-352d												
A-6040	BA10 submission for authorized signatory and subcontractor	7d/wk-2	1d	12-Nov-14 08	12-Nov-14 18	-304d												
A-6030	Jetty beams construction	7d/wk-2	14d	12-Nov-14 08	25-Nov-14 18	-352d												
A-6052	Construction of floating pontoon	7d/wk-2	14d	26-Nov-14 08	09-Dec-14 18	-331d												
A-6050	BA13 submission + 14-day cube test results	7d/wk-2	28d	26-Nov-14 08	23-Dec-14 18	-352d												
A-6060	E&M and accessories installation	7d/wk-2	7d	24-Dec-14 08	30-Dec-14 18	-352d												
A-6070	Handover to RHKYC	7d/wk-2	1d	31-Dec-14 08	31-Dec-14 18	-352d												
Stage 11 - Construction of TZ4																		
A-6080	South side - laying rockfill and levelling stone (Qty: 1,550 cu.m)	7d/wk-2	12d	24-Sep-14 08	05-Oct-14 18	-339d												
A-6090	South side - install seawall blocks (Qty: 255 nos.)	7d/wk-2	6d	06-Oct-14 08	11-Oct-14 18	-339d												
A-7000	South side - general fill (Qty: 2,000 cu.m.)	7d/wk-2	2d	12-Oct-14 08	13-Oct-14 18	-339d												
A-7010	North side - laying rockfill and levelling stone (Qty: 1,550 cu.m)	7d/wk-2	12d	21-Oct-14 08	01-Nov-14 18	-346d												
A-7020	North side - install seawall blocks (Qty: 255 nos.)	7d/wk-2	6d	02-Nov-14 08	07-Nov-14 18	-346d												
A-7030	North side - general fill (Qty:2,000 cu.m.)	7d/wk-2	2d	08-Nov-14 08	09-Nov-14 18	-346d												
A-7040	Handover to contract TS3/SR8	7d/wk-2	1d	10-Nov-14 08	10-Nov-14 18*	-346d												
TS4/ME4, Removal of Temporary Reclamation																		
S26875	Completion of Section 2 (With ME4 option) (KD7)	7d/wk-2	0d		17-Nov-14 18	-353d												
S26890	Completion of Section 7B (ME4) (KD13)	7d/wk-2	0d		17-Nov-14 18	-353d												
TS4 - OHVD / Cable Trough																		
S5_6185	TS4 (incl. TS4+) - OHVD Slab - Area C (access through temp. opening at TZ4)	7d/wk-1	36d	02-Jan-15 08*	06-Feb-15 18	195d												
S5_6190	TS4 (incl. TS4+) - Cable Trough (access through temp. opening at TZ4)	7d/wk-1	60d	07-Feb-15 08*	14-Apr-15 18	195d												
S5_59850	Completion of Section 5 - TS4/ME4 Area (KD10), below -20mPD	7d/wk-2	0d		02-Nov-15 18*	0d												
Works in TPCWAE Area (Portion 20A, 20B)																		
Removal of Temporary Reclamation																		
Removal of Temporary Reclamation & Form TZ5																		
S87670	Remove general fill /sea wall block	7d/wk-1	24d	20-May-14 08A	08-Oct-14 18	-296d												
S87675	Diaphragm wall saw cutting (1st D Wall cut on 23 Jun 2014)	7d/wk-1	31d	03-Sep-14 08A	16-Oct-14 18	-306d												
S87755	Form TZ5	7d/wk-1	18d	25-Sep-14 08	14-Oct-14 18	-304d												

- Summary Bar
- Actual Level of Effort
- Actual Work
- Remaining Work
- Critical Remaining Work
- Milestone

3 of 18

China State Construction Engineering (Hong Kong) Ltd
 Contract No. HY/2009/15 - Central Wan Chai By Pass - Tunnel (Causeway Bay Typhoon Shelter Section)
WORKS PROGRAMME REV. M

Prepared by William Caluza			
Date	Revision	Checked	Approved
26-Sep...	1st submission		



Activity ID	Activity Name	Calendar	Original Duration	Start	Finish	Total Float	2015				2016								
							Q4	Q1	Q2	Q3	Q4	Q1	Q2	Q3					
S67885	Achievement of KD5	7d/wk-2	0d		16-Oct-14 18	-323d													
S67887	Complete Reinstatement of Vertical Seawall (near PRE Office)	7d/wk-2	0d		27-Oct-14 18	-322d													
Reinstate Mucking Out Access Shaft "C"																			
S67240	Start reinstatement works (after completion of TPCWAW OHVD works)	6d/wk	0d	28-Mar-16 08		-102d													
S67225	Cast slab opening at top of CCT West bound (access shaft)	6d/wk	18d	28-Mar-16 08	16-Apr-16 18	-102d													
S67230	Removal of vertical shaft and backfilling	6d/wk	48d	11-Apr-16 08	04-Jun-16 18	-102d													
S67235	Reinstatement of pavement	6d/wk	12d	30-May-16 08	11-Jun-16 18	-102d													
TPCWAE - OHVD / Cable Trough																			
S5_7405	TPCWAE - Cable Trough (access through temp. opening at TZ5 & Portion 19)	6d/wk	48d	04-Sep-15 08	02-Nov-15 18	0d													
S5_7400	TPCWAE - OHVD Slab AT Area A (access through temp. opening at TZ5 & Portion 19)	6d/wk	48d	04-Sep-15 08	02-Nov-15 18	0d													
S5_59840	Completion of Section 5 - TPCWAE Area (KD10), below -20mPD	7d/wk-2	0d		02-Nov-15 18*	0d													
Works in TPCWAW Area																			
TPCWAW - Temporary Reclamation																			
Temporary Reclamation -																			
S6_9440	TPCWAW - place levelling stone and tamping, South side	7d/wk-1	6d	15-Oct-14 08	20-Oct-14 18	-122d													
S6_9450	TPCWAW - place seawall block to +4 at South side (Qty: 569 nos. @ 50 nos/day)	7d/wk-1	12d	21-Oct-14 08	01-Nov-14 18	-122d													
S6_9465	TPCWAW - place levelling stone and tamping, North side	7d/wk-1	6d	02-Nov-14 08	07-Nov-14 18	-122d													
S6_9470	TPCWAW - place seawall blocks to +4 North side (Qty:672 nos @ 50 nos/day)	7d/wk-1	14d	08-Nov-14 08	21-Nov-14 18	-122d													
S6_9495	TPCWAW - General fill to +2 within the seawall	7d/wk-1	17d	15-Nov-14 08	01-Dec-14 18	-122d													
S6_9490	TPCWAW - place seawall blocks to +4 at the temporary opening	7d/wk-1	7d	02-Dec-14 08	08-Dec-14 18	-122d													
S6_9475	TPCWAW - Remaining General fill to +4 within the seawall	7d/wk-1	10d	09-Dec-14 08	18-Dec-14 18	-122d													
TPCWAW - Diaphragm Wall																			
Diaphragm Wall																			
S6_9385	Site investigation	7d/wk-1	49d	01-Dec-14 08	21-Jan-15 18	-113d													
S6_8960	Install guide wall	7d/wk-1	40d	17-Dec-14 08	28-Jan-15 18	-120d													
S6_8955	Curtain grout along proposed diaphragm wall	7d/wk-1	40d	19-Dec-14 08	30-Jan-15 18	-122d													
S6_9382	Set up bentonite silo/plants and equipments	7d/wk-1	30d	19-Dec-14 08	20-Jan-15 18	-112d													
S6_9345	Diaphragm wall construction (34 panels @ 3 panels/ week)	7d/wk-1	68d	30-Jan-15 08	14-Apr-15 18	-141d													
S6_9350	Install shear pins on diaphragm wall	7d/wk-1	40d	14-Mar-15 08	26-Apr-15 18	-133d													

-  Summary Bar
-  Actual Level of Effort
-  Actual Work
-  Remaining Work
-  Critical Remaining Work
-  Milestone

4 of 18

China State Construction Engineering (Hong Kong) Ltd

Contract No. HY/2009/15 - Central Wan Chai By Pass - Tunnel (Causeway Bay Typhoon Shelter Section)

WORKS PROGRAMME REV. M

Prepared by William Caluza

Date	Revision	Checked	Approved
26-Sep...	1st submission		



中國建築工程(香港)有限公司
CHINA STATE CONSTRUCTION ENGINEERING (HONG KONG) LTD.

Activity ID	Activity Name	Calendar	Original Duration	Start	Finish	Total Float	2015				2016			
							Q4	Q1	Q2	Q3	Q4	Q1	Q2	Q3
S6_9355	Install king posts	7d/wk-1	40d	14-Mar-15 08	26-Apr-15 18	-133d			■	Install king posts				
S6_8970	Diaphragm Wall Pile test	7d/wk-1	40d	20-Mar-15 08	03-May-15 18	-129d			■	Diaphragm Wall Pile test				
S6_9375	Carry out contact/fissure grouting	7d/wk-1	29d	21-Mar-15 08	22-Apr-15 18	-141d			■	Carry out contact/fissure grouting				
TPCWAW- ELS Works														
ELS Works														
S6_9360	Install dewatering wells and piezometers	7d/wk-1	20d	30-Mar-15 08	22-Apr-15 18	-141d			■	Install dewatering wells and piezometers				
S6_9365	Install inclinometers inside D-wall	7d/wk-1	20d	15-Apr-15 08	05-May-15 18	-141d			■	Install inclinometers inside D-wall				
S6_8975	Carry out pumping tests	7d/wk-1	12d	23-Apr-15 08	05-May-15 18	-141d			■	Carry out pumping tests				
S6_8980	1st Layer - D Wall conc over break if any & Soft Excavation	7d/wk-1	10d	06-May-15 08	15-May-15 18	-141d			■	1st Layer - D Wall conc over break if any & Soft Excavation				
S6_9260	Submit pumping test report	7d/wk-1	1d	06-May-15 08	06-May-15 18	-137d				Submit pumping test report				
S6_8985	1st Layer - install lateral support	7d/wk-1	10d	16-May-15 08	26-May-15 18	-141d			■	1st Layer - install lateral support				
S6_8990	Install vibrating wire strain gauge	7d/wk-1	10d	16-May-15 08	26-May-15 18	-141d			■	Install vibrating wire strain gauge				
S6_8995	2nd Layer - D Wall conc over break if any & Soft Excavation	7d/wk-1	10d	18-May-15 08	28-May-15 18	-141d			■	2nd Layer - D Wall conc over break if any & Soft Excavation				
S6_9000	2nd Layer - install lateral support	7d/wk-1	10d	29-May-15 08	07-Jun-15 18	-141d			■	2nd Layer - install lateral support				
S6_9005	3rd Layer - D Wall conc over break if any & Soft Excavation	7d/wk-1	10d	31-May-15 08	09-Jun-15 18	-141d			■	3rd Layer - D Wall conc over break if any & Soft Excavation				
S6_9010	3rd Layer - install lateral support	7d/wk-1	10d	10-Jun-15 08	19-Jun-15 18	-141d			■	3rd Layer - install lateral support				
S6_9015	4th Layer - D Wall conc over break if any & Soft Excavation	7d/wk-1	10d	12-Jun-15 08	22-Jun-15 18	-141d			■	4th Layer - D Wall conc over break if any & Soft Excavation				
S6_9020	4th Layer - install lateral support	7d/wk-1	10d	23-Jun-15 08	03-Jul-15 18	-141d			■	4th Layer - install lateral support				
S6_9025	5th Layer - D Wall conc over break if any & Soft Excavation	7d/wk-1	10d	25-Jun-15 08	05-Jul-15 18	-141d			■	5th Layer - D Wall conc over break if any & Soft Excavation				
S6_9030	5th Layer - install lateral support	7d/wk-1	10d	27-Jun-15 08	07-Jul-15 18	-141d			■	5th Layer - install lateral support				
S6_9035	6th Layer - D Wall conc over break if any & Soft Excavation	7d/wk-1	10d	08-Jul-15 08	17-Jul-15 18	-141d			■	6th Layer - D Wall conc over break if any & Soft Excavation				
S6_9040	6th Layer - install lateral support	7d/wk-1	10d	18-Jul-15 08	27-Jul-15 18	-69d			■	6th Layer - install lateral support				
TPCWAW - ROCK EXCAVATION														
S6_6180	Rock excavation to formation	7d/wk-1	112d	18-Jul-15 08	09-Nov-15 18	-141d			■	Rock excavation to formation				
S6_9370	Install tie back anchor to D- Walls (area on west side, near Portion 11)	7d/wk-1	25d	20-Jul-15 08	13-Aug-15 18	-69d			■	Install tie back anchor to D- Walls (area on west side, near Portion 11)				
S6_9415	Install tie back anchor to D- Walls (east area)	7d/wk-1	20d	20-Jul-15 08	08-Aug-15 18	-69d			■	Install tie back anchor to D- Walls (east area)				
S6_9055	Provide Access to WDII Contractor for demolition of bulkhead at Portion 11	7d/wk-2	0d		10-Nov-15 18	-133d			◆	Provide Access to WDII Contractor for demolition of bulkhead				
TPCWAW- CCT RC Structure														
TPCWAW - CCT / OHVD														

- Summary Bar
- Actual Level of Effort
- Actual Work
- Remaining Work
- Critical Remaining Work
- ◆ Milestone

5 of 18

China State Construction Engineering (Hong Kong) Ltd

Contract No. HY/2009/15 - Central Wan Chai By Pass - Tunnel (Causeway Bay Typhoon Shelter Section)

WORKS PROGRAMME REV. M

Prepared by William Caluza			
Date	Revision	Checked	Approved
26-Sep...	1st submission		



Activity ID	Activity Name	Calendar	Original Duration	Start	Finish	Total Float	2015				2016				
							Q4	Q1	Q2	Q3	Q4	Q1	Q2	Q3	
A8705	SR8 Bench Excavation From West, CH 4065- 4075 = 10m	7d/wk-1a	20d	25-Sep-14 08	15-Oct-14 18	148d									
A8685	SR8 Bench Excavation From West, CH 4075- 4085 = 10m	7d/wk-1a	20d	16-Oct-14 08	04-Nov-14 18	148d									
A8680	SR8 Bench Excavation From West, CH 4085- 4095 = 10m	7d/wk-1a	20d	05-Nov-14 08	24-Nov-14 18	148d									
A8725	SR8 Bench Excavation From West, CH 4095- 4100 = 5m	7d/wk-1a	10d	25-Nov-14 08	04-Dec-14 18	148d									
From East (TS4)															
Heading Excavation (2d/m, 24h/day work shift, 7d/week, no work on statutory holiday)															
A8495	SR8 Heading Excavation From East CH 4115- 4107 = 8m @2d/m	7d/wk-1a	16d	15-Sep-14 08 A	28-Sep-14 18	10d									
Bench Excavation (1.5d/m, 20m separation with heading)															
A8455	SR8 Bench Excavation From East, CH 4147.5- 4135 = 12.5m	7d/wk-1a	19d	20-Sep-14 08	09-Oct-14 18	0d									
A8470	SR8 Bench Excavation From East, CH 4135- 4125 = 10m	7d/wk-1a	15d	10-Oct-14 08	24-Oct-14 18	0d									
A8460	SR8 Bench Excavation From East, CH 4125- 4115 = 10m	7d/wk-1a	15d	25-Oct-14 08	08-Nov-14 18	0d									
A8465	SR8 Bench Excavation From East, CH 4115- 4100 = 15m	7d/wk-1a	23d	09-Nov-14 08	01-Dec-14 18	0d									
Tunnel Lining Works															
From West - Base Slab (10m/bay, 10m separation with benching excavation)															
A8525	SR8, From West, CH 4015 - 4025 = 10m/bay, base slab	7d/wk-1a	10d	15-Sep-14 08 A	04-Oct-14 18	137d									
A8530	SR8, From West, CH 4025 - 4035 = 10m/bay, base slab	7d/wk-1a	10d	05-Oct-14 08	14-Oct-14 18	163d									
A8535	SR8, From West, CH 4035 - 4045 = 10m/bay, base slab	7d/wk-1a	8d	15-Oct-14 08	22-Oct-14 18	165d									
A8540	SR8, From West, CH 4045 - 4055 = 10m/bay, base slab	7d/wk-1a	8d	23-Oct-14 08	30-Oct-14 18	165d									
A8545	SR8, From West, CH 4055 - 4065 = 10m/bay, base slab	7d/wk-1a	8d	05-Nov-14 08	12-Nov-14 18	160d									
A8550	SR8, From West, CH 4065 - 4075 = 10m/bay, base slab	7d/wk-1a	8d	25-Nov-14 08	02-Dec-14 18	148d									
A8555	SR8, From West, CH 4075 - 4085 = 10m/bay, base slab	7d/wk-1a	8d	05-Dec-14 08	12-Dec-14 18	148d									
A8560	SR8, From West, CH 4085 - 4095 = 10m/bay, base slab	7d/wk-1a	8d	13-Dec-14 08	20-Dec-14 18	150d									
A8561	SR8, From West, CH 4095 - 4105 = 10m/bay, base slab	7d/wk-1a	8d	21-Dec-14 08	29-Dec-14 18	152d									
A8562	SR8, From West, CH 4105 - 4115 = 10m/bay, base slab	7d/wk-1a	8d	30-Dec-14 08	07-Jan-15 18	154d									
From West - Lining (5m/bay, 10m separation with base slab)															
A8575	SR8, From West, CH 3995 - 4000 = 1bay, lining	7d/wk-1a	9d	20-Sep-14 08	28-Sep-14 18	0d									
A8580	SR8, From West, CH 4000 - 4005 = 1bay, lining	7d/wk-1a	9d	05-Oct-14 08	13-Oct-14 18	137d									
A8585	SR8, From West, CH 4005 - 4010 = 1bay, lining	7d/wk-1a	9d	14-Oct-14 08	22-Oct-14 18	137d									
A8590	SR8, From West, CH 4010 - 4015 = 1bay, lining	7d/wk-1a	9d	23-Oct-14 08	31-Oct-14 18	137d									

- Summary Bar
- ▬ Actual Level of Effort
- ▬ Actual Work
- ▬ Remaining Work
- ▬ Critical Remaining Work
- ◆ Milestone

7 of 18

China State Construction Engineering (Hong Kong) Ltd

Contract No. HY/2009/15 - Central Wan Chai By Pass - Tunnel (Causeway Bay Typhoon Shelter Section)

WORKS PROGRAMME REV. M

Prepared by William Caluza

Date	Revision	Checked	Approved
26-Sep...	1st submission		



中國建築工程(香港)有限公司
CHINA STATE CONSTRUCTION ENGINEERING (HONG KONG) LTD.

Activity ID	Activity Name	Calendar	Original Duration	Start	Finish	Total Float	2015				2016						
							Q4	Q1	Q2	Q3	Q4	Q1	Q2	Q3			
A8595	SR8, From West, CH 4015 - 4020 = 1bay, lining	7d/wk-1a	9d	01-Nov-14 08	09-Nov-14 18	137d											
A8600	SR8, From West, CH 4020 - 4025 = 1bay, lining	7d/wk-1a	9d	10-Nov-14 08	18-Nov-14 18	137d											
A8605	SR8, From West, CH 4025 - 4030 = 1bay, lining	7d/wk-1a	5d	19-Nov-14 08	23-Nov-14 18	137d											
A8610	SR8, From West, CH 4030 - 4035 = 1bay, lining	7d/wk-1a	5d	24-Nov-14 08	28-Nov-14 18	137d											
A8615	SR8, From West, CH 4035 - 4040 = 1bay, lining	7d/wk-1a	5d	29-Nov-14 08	03-Dec-14 18	137d											
A8620	SR8, From West, CH 4040 - 4045 = 1bay, lining	7d/wk-1a	5d	04-Dec-14 08	08-Dec-14 18	137d											
A8625	SR8, From West, CH 4045 - 4050 = 1bay, lining	7d/wk-1a	5d	09-Dec-14 08	13-Dec-14 18	137d											
A8630	SR8, From West, CH 4050 - 4055 = 1bay, lining	7d/wk-1a	5d	14-Dec-14 08	18-Dec-14 18	137d											
A8635	SR8, From West, CH 4055 - 4060 = 1bay, lining	7d/wk-1a	5d	19-Dec-14 08	23-Dec-14 18	137d											
A8640	SR8, From West, CH 4060 - 4065 = 1bay, lining	7d/wk-1a	5d	24-Dec-14 08	29-Dec-14 18	137d											
A8645	SR8, From West, CH 4065 - 4070 = 1bay, lining	7d/wk-1a	5d	30-Dec-14 08	04-Jan-15 18	137d											
A8647	SR8, From West, CH 4070 - 4075 = 1bay, lining	7d/wk-1a	5d	05-Jan-15 08	09-Jan-15 18	137d											
A8648	SR8, From West, CH 4075 - 4080 = 1bay, lining	7d/wk-1a	5d	10-Jan-15 08	14-Jan-15 18	137d											
A8649	SR8, From West, CH 4080 - 4085 = 1bay, lining	7d/wk-1a	5d	15-Jan-15 08	19-Jan-15 18	137d											
A8651	SR8, From West, CH 4085 - 4090 = 1bay, lining	7d/wk-1a	5d	20-Jan-15 08	24-Jan-15 18	137d											
A8652	SR8, From West, CH 4090 - 4095 = 1bay, lining	7d/wk-1a	5d	25-Jan-15 08	29-Jan-15 18	137d											
A8653	SR8, From West, CH 4095 - 4100 = 1bay, lining	7d/wk-1a	5d	30-Jan-15 08	03-Feb-15 18	137d											
A8654	SR8, From West, CH 4100 - 4105 = 1bay, lining	7d/wk-1a	5d	04-Feb-15 08	08-Feb-15 18	137d											
From East - Base Slab (10m/bay, 10m separation with benching excavation)																	
A9775	SR8 From East, CH 4149.5 - 4145 = 4.5m, base slab	7d/wk-1a	8d	02-Dec-14 08	09-Dec-14 18	0d											
A9780	SR8 From East, CH 4145 - 4135 = 10m/bay, base slab	7d/wk-1a	8d	10-Dec-14 08	17-Dec-14 18	0d											
A9785	SR8 From East, CH 4135 - 4125 = 10m/bay, base slab	7d/wk-1a	8d	18-Dec-14 08	26-Dec-14 18	8d											
A9786	SR8 From East, CH 4125 - 4115 = 10m/bay, base slab	7d/wk-1a	8d	27-Dec-14 08	04-Jan-15 18	10d											
From East - Lining (5m/bay, 10m separation with base slab)																	
A9820	From East, SR8 CH 4149.5 - 4145 = 4.5m, 1 bay, lining	7d/wk-1a	5d	18-Dec-14 08	22-Dec-14 18	0d											
A9815	From East, SR8 CH 4145 - 4140 = 1bay, lining	7d/wk-1a	5d	23-Dec-14 08	28-Dec-14 18	6d											
A9810	From East, SR8 CH 4140 - 4135 = 1bay, lining	7d/wk-1a	5d	29-Dec-14 08	03-Jan-15 18	6d											
A9805	From East, SR8 CH 4135 - 4130 = 1bay, lining	7d/wk-1a	5d	04-Jan-15 08	08-Jan-15 18	6d											

- Summary Bar
- Actual Level of Effort
- Actual Work
- Remaining Work
- Critical Remaining Work
- ◆ Milestone

8 of 18

China State Construction Engineering (Hong Kong) Ltd

Contract No. HY/2009/15 - Central Wan Chai By Pass - Tunnel (Causeway Bay Typhoon Shelter Section)

WORKS PROGRAMME REV. M

Prepared by William Caluza

Date	Revision	Checked	Approved
26-Sep...	1st submission		



中國建築工程(香港)有限公司
CHINA STATE CONSTRUCTION ENGINEERING (HONG KONG) LTD.

Activity ID	Activity Name	Calendar	Original Duration	Start	Finish	Total Float	2015				2016		
							Q4	Q1	Q2	Q3	Q4	Q1	Q2
A9870	From East, SR8 CH 4130 - 4125 = 1bay, lining	7d/wk-1a	5d	09-Jan-15 08	13-Jan-15 18	6d		■	From East, SR8 CH 4130 - 4125 = 1bay, lining				
A9800	From East, SR8 CH 4125 - 4120 = 1bay, lining	7d/wk-1a	5d	14-Jan-15 08	18-Jan-15 18	143d		■	From East, SR8 CH 4125 - 4120 = 1bay, lining				
A9860	From East, SR8 CH 4120 - 4115 = 1bay, lining	7d/wk-1a	5d	19-Jan-15 08	23-Jan-15 18	143d		■	From East, SR8 CH 4120 - 4115 = 1bay, lining				
A9855	From East, SR8 CH 4115 - 4110 = 1bay, lining	7d/wk-1a	5d	24-Jan-15 08	28-Jan-15 18	143d		■	From East, SR8 CH 4115 - 4110 = 1bay, lining				
A9850	From East, SR8 CH 4110 - 4105 = 1bay, lining	7d/wk-1a	5d	29-Jan-15 08	02-Feb-15 18	143d		■	From East, SR8 CH 4110 - 4105 = 1bay, lining				
OHVD(10m/bay) / Utility Trough													
A8570	SR8 Tunnel OHVD and utility trough =, 167= 17 bays @ 10m/bay @ 7d/bay	7d/wk-1a	120d	09-Feb-15 08	13-Jun-15 18	137d		■	SR8 Tunnel OHVD and utility trough =, 167= 17 bays @ 10m/bay @ 7d/bay				
EB Outer Tunnel Excavation													
From West (TPCWAE)													
Outer Bench Excavation (1.5d - 2d/m, 20m separation with heading)													
A9550	EB, Outer Bench From West, CH 4035- 4045 = 10m	7d/wk-1a	30d	07-Aug-14 08 A	20-Oct-14 18	135d	■	EB, Outer Bench From West, CH 4035- 4045 = 10m					
A9555	EB, Outer Bench From West, CH 4045- 4055 = 10m (2d/m)	7d/wk-1a	20d	20-Oct-14 08	08-Nov-14 18	135d	■	EB, Outer Bench From West, CH 4045- 4055 = 10m (2d/m)					
A9560	EB, Outer Bench From West, CH 4055- 4065 = 10m (2d/m)	7d/wk-1a	20d	09-Nov-14 08	28-Nov-14 18	135d	■	EB, Outer Bench From West, CH 4055- 4065 = 10m (2d/m)					
A9565	EB, Outer Bench From West, CH 4065- 4075 = 10m (2d/m)	7d/wk-1a	20d	29-Nov-14 08	18-Dec-14 18	135d	■	EB, Outer Bench From West, CH 4065- 4075 = 10m (2d/m)					
A9520	EB, Outer Bench From West, CH 4075- 4085 = 10m (2d/m)	7d/wk-1a	20d	19-Dec-14 08	09-Jan-15 18	135d	■	EB, Outer Bench From West, CH 4075- 4085 = 10m (2d/m)					
A9545	EB, Outer Bench From West, CH 4085- 4095 = 10m 1.5d/m)	7d/wk-1a	15d	10-Jan-15 08	24-Jan-15 18	135d	■	EB, Outer Bench From West, CH 4085- 4095 = 10m 1.5d/m)					
From East (TS4)													
Outer Bench Excavation (1.5d-2d/m, 20m separation with heading)													
A9605	EB, Outer Bench From East, CH 4147.5 - 4145 = 2.5m	7d/wk-1a	30d	20-Oct-14 08*	18-Nov-14 18	120d	■	EB, Outer Bench From East, CH 4147.5 - 4145 = 2.5m					
A9610	EB, Outer Bench From East, CH 4145- 4135 = 10m (2d/m)	7d/wk-1a	20d	19-Nov-14 08	08-Dec-14 18	120d	■	EB, Outer Bench From East, CH 4145- 4135 = 10m (2d/m)					
A9615	EB, Outer Bench From East, CH 4135- 4125 = 10m (2d/m)	7d/wk-1a	20d	09-Dec-14 08	29-Dec-14 18	120d	■	EB, Outer Bench From East, CH 4135- 4125 = 10m (2d/m)					
A9620	EB, Outer Bench From East, CH 4125- 4115 = 10m (2d/m)	7d/wk-1a	20d	30-Dec-14 08	19-Jan-15 18	120d	■	EB, Outer Bench From East, CH 4125- 4115 = 10m (2d/m)					
A9625	EB, Outer Bench From East, CH 4115- 4105 = 10m (2d/m)	7d/wk-1a	20d	20-Jan-15 08	08-Feb-15 18	120d	■	EB, Outer Bench From East, CH 4115- 4105 = 10m (2d/m)					
A9630	EB, Outer Bench From East, CH 4105- 4095 = 10m (1.5d/m)	7d/wk-1a	15d	09-Feb-15 08	26-Feb-15 18	120d	■	EB, Outer Bench From East, CH 4105- 4095 = 10m (1.5d/m)					
EB (Inner Tunnel Excavation + Lining)													
From West (TPCWAE)													
Inner Heading Excavation (2d/m, 24h/day work shift, 7d/week, no work on statutory holiday)													
A8805	EB, Inner Heading From West, CH 3992- 4005 = 13m @3d/m	7d/wk-1a	39d	29-Sep-14 08	07-Nov-14 18	0d	■	EB, Inner Heading From West, CH 3992- 4005 = 13m @3d/m					
A8815	EB, Inner Heading From West, CH 4005- 4015 = 10m @2d/m	7d/wk-1a	20d	08-Nov-14 08	27-Nov-14 18	0d	■	EB, Inner Heading From West, CH 4005- 4015 = 10m @2d/m					

- Summary Bar
- Actual Level of Effort
- Actual Work
- Remaining Work
- Critical Remaining Work
- ◆ Milestone

9 of 18

China State Construction Engineering (Hong Kong) Ltd

Contract No. HY/2009/15 - Central Wan Chai By Pass - Tunnel (Causeway Bay Typhoon Shelter Section)

WORKS PROGRAMME REV. M

Prepared by William Caluza

Date	Revision	Checked	Approved
26-Sep...	1st submission		



中國建築工程(香港)有限公司
CHINA STATE CONSTRUCTION ENGINEERING (HONG KONG) LTD.

Activity ID	Activity Name	Calendar	Original Duration	Start	Finish	Total Float	2015				2016				
							Q4	Q1	Q2	Q3	Q4	Q1	Q2	Q3	
A8820	EB,Inner Heading From West , CH 4015- 4025 = 10m @2d/m	7d/wk-1a	20d	28-Nov-14 08	17-Dec-14 18	0d		■	■						
A8780	EB,Inner Heading From West, CH 4025- 4035 = 10m @2d/m	7d/wk-1a	20d	18-Dec-14 08	08-Jan-15 18	0d		■	■						
A8810	EB,Inner Heading From West , CH 4035- 4045 = 10m @2d/m	7d/wk-1a	20d	09-Jan-15 08	28-Jan-15 18	0d		■	■						
A8785	EB,Inner Heading From West , CH 4045- 4055 = 10m @2d/m	7d/wk-1a	20d	29-Jan-15 08	17-Feb-15 18	0d		■	■						
A8790	EB,Inner Heading From West, CH 4055- 4065 = 10m @ 2d/m	7d/wk-1a	20d	18-Feb-15 08	12-Mar-15 18	0d		■	■						
A8795	EB,Inner Heading From West , CH 4065- 4075 = 10m, @ 2d/m	7d/wk-1a	20d	13-Mar-15 08	01-Apr-15 18	0d		■	■						
A8800	EB,Inner Heading From West, CH 4075- 4085 = 10m @ 2d/m	7d/wk-1a	20d	02-Apr-15 08	22-Apr-15 18	0d		■	■						
A8825	EB,Inner Heading From West, CH 4085- 4095 = 10m @ 2d/m	7d/wk-1a	20d	23-Apr-15 08	13-May-15 18	0d		■	■						
Inner Bench Excavation (1.5-2d/m, 20m separation with heading)															
A8765	EB, Inner Bench From West, CH 3992-4005 = 13m (2d/m)	7d/wk-1a	26d	08-Nov-14 08	03-Dec-14 18	23d		■							
A8770	EB, Inner Bench From West,CH 4005- 4015 = 10m	7d/wk-1a	15d	18-Dec-14 08	03-Jan-15 18	9d		■							
A8775	EB, Inner Bench From West,CH 4015- 4025 = 10m	7d/wk-1a	15d	09-Jan-15 08	23-Jan-15 18	4d		■							
A8735	EB, Inner Bench From West,CH 4025- 4035 = 10m	7d/wk-1a	15d	29-Jan-15 08	12-Feb-15 18	14d		■							
A8740	EB, Inner Bench From West,CH 4035- 4045 = 10m	7d/wk-1a	15d	18-Feb-15 08	07-Mar-15 18	11d		■							
A8745	EB, Inner Bench From West,CH 4045- 4055 = 10m	7d/wk-1a	15d	13-Mar-15 08	27-Mar-15 18	6d		■							
A8750	EB, Inner Bench From West,CH 4055- 4065 = 10m	7d/wk-1a	15d	02-Apr-15 08	17-Apr-15 18	1d		■							
A8755	EB, Inner Bench From West,CH 4065- 4075 = 10m	7d/wk-1a	15d	18-Apr-15 08	03-May-15 18	1d		■							
A8760	EB, Inner Bench From West,CH 4075- 4085 = 10m	7d/wk-1a	15d	05-May-15 08	19-May-15 18	0d		■							
A8761	EB, Inner Bench From West,CH 4085- 4095 = 10m	7d/wk-1a	15d	20-May-15 08	03-Jun-15 18	0d		■							
From East (TS4)															
Inner Heading Excavation (3d/m, 24h/day work shift, 7d/week, no work on statutory holiday)															
A8835	EB,Inner Heading From East, CH 4147.5 to 4145 = 2.5m, @ 3d/m	7d/wk-1a	8d	06-Jan-15 08	13-Jan-15 18	0d		■							
A8850	EB,Inner Heading From East, CH 4145- 4135 = 10m, @ 3d/m	7d/wk-1a	30d	14-Jan-15 08	12-Feb-15 18	0d		■							
A8830	EB,Inner Heading From East, CH 4135- 4125 = 10m @2d/m	7d/wk-1a	20d	13-Feb-15 08	07-Mar-15 18	0d		■							
A8840	EB,Inner Heading From East, CH 4125- 4115 = 10m @2d/m	7d/wk-1a	20d	08-Mar-15 08	27-Mar-15 18	0d		■							
A9910	EB,Inner Heading From East, CH 4115- 4105 = 10m @2d/m	7d/wk-1a	20d	28-Mar-15 08	17-Apr-15 18	0d		■							
A8845	EB,Inner Heading From East, CH 4105- 4095 = 10m @2d/m	7d/wk-1a	20d	18-Apr-15 08	08-May-15 18	0d		■							
Inner Bench Excavation (1.5d-2d/m, 20m separation with heading)															
A8860	EB,Inner Bench From East, CH 4147.5 - 4145 = 2.5m	7d/wk-1a	4d	08-Mar-15 08	11-Mar-15 18	11d		■							

- Summary Bar
- Actual Level of Effort
- Actual Work
- Remaining Work
- Critical Remaining Work
- ◆ Milestone

10 of 18

China State Construction Engineering (Hong Kong) Ltd

Contract No. HY/2009/15 - Central Wan Chai By Pass - Tunnel (Causeway Bay Typhoon Shelter Section)

WORKS PROGRAMME REV. M

Prepared by William Caluza			
Date	Revision	Checked	Approved
26-Sep...	1st submission		

中國建築工程(香港)有限公司
 CHINA STATE CONSTRUCTION ENGINEERING (HONG KONG) LTD.

Activity ID	Activity Name	Calendar	Original Duration	Start	Finish	Total Float	2015				2016			
							Q4	Q1	Q2	Q3	Q4	Q1	Q2	Q3
A8865	EB, Inner Bench From East, CH 4145- 4135 = 10m	7d/wk-1a	15d	12-Mar-15 08	26-Mar-15 18	11d			■ EB, Inner Bench From East, CH 4145- 4135 = 10m					
A8870	EB, Inner Bench From East, CH 4135- 4125 = 10m	7d/wk-1a	15d	28-Mar-15 08	12-Apr-15 18	10d			■ EB, Inner Bench From East, CH 4135- 4125 = 10m					
A8855	EB, Inner Bench From East, CH 4125- 4115 = 10m	7d/wk-1a	15d	18-Apr-15 08	03-May-15 18	5d			■ EB, Inner Bench From East, CH 4125- 4115 = 10m					
A8875	EB, Inner Bench From East, CH 4115- 4105 = 10m	7d/wk-1a	15d	09-May-15 08	23-May-15 18	0d			■ EB, Inner Bench From East, CH 4115- 4105 = 10m					
A9915	EB, Inner Bench From East, CH 4105- 4095 = 10m	7d/wk-1a	15d	24-May-15 08	08-Jun-15 18	0d			■ EB, Inner Bench From East, CH 4105- 4095 = 10m					
Tunnel Lining Works														
From West Base Slab (10m/bay, 10m separation with benching excavation)														
A8900	EB From West, Base Slab CH 3990 - 3995 = 1 bay	7d/wk-1a	10d	04-Dec-14 08	13-Dec-14 18	33d			■ EB From West, Base Slab CH 3990 - 3995 = 1 bay					
A8890	EB From West, Base Slab CH 3995 - 4005 = 10m/bay	7d/wk-1a	10d	04-Jan-15 08	13-Jan-15 18	14d			■ EB From West, Base Slab CH 3995 - 4005 = 10m/bay					
A8905	EB From West, Base Slab CH 4005 - 4015 = 10m/bay	7d/wk-1a	10d	24-Jan-15 08	02-Feb-15 18	4d			■ EB From West, Base Slab CH 4005 - 4015 = 10m/bay					
A8910	EB From West, Base Slab CH 4015 - 4025 = 10m/bay	7d/wk-1a	10d	13-Feb-15 08	25-Feb-15 18	14d			■ EB From West, Base Slab CH 4015 - 4025 = 10m/bay					
A8915	EB From West, Base Slab CH 4025 - 4035 = 10m/bay	7d/wk-1a	10d	08-Mar-15 08	17-Mar-15 18	12d			■ EB From West, Base Slab CH 4025 - 4035 = 10m/bay					
A8920	EB From West, Base Slab CH 4035 - 4045 = 10m/bay	7d/wk-1a	10d	28-Mar-15 08	07-Apr-15 18	8d			■ EB From West, Base Slab CH 4035 - 4045 = 10m/bay					
A8925	EB From West, Base Slab CH 4045 - 4055 = 10m/bay	7d/wk-1a	10d	18-Apr-15 08	27-Apr-15 18	4d			■ EB From West, Base Slab CH 4045 - 4055 = 10m/bay					
A8930	EB From West, Base Slab CH 4055 - 4065 = 10m/bay	7d/wk-1a	10d	04-May-15 08	13-May-15 18	5d			■ EB From West, Base Slab CH 4055 - 4065 = 10m/bay					
A8880	EB From West, Base Slab CH 4065 - 4075 = 10m/bay	7d/wk-1a	10d	20-May-15 08	29-May-15 18	5d			■ EB From West, Base Slab CH 4065 - 4075 = 10m/bay					
A8885	EB From West, Base Slab CH 4075 - 4085 = 10m/bay	7d/wk-1a	10d	04-Jun-15 08	13-Jun-15 18	0d			■ EB From West, Base Slab CH 4075 - 4085 = 10m/bay					
A8895	EB From West, Base Slab CH 4085 - 4095 = 10m/bay	7d/wk-1a	10d	14-Jun-15 08	24-Jun-15 18	0d			■ EB From West, Base Slab CH 4085 - 4095 = 10m/bay					
From East Base Slab (10m/bay, 10m separation with benching excavation)														
A9905	EB From East, Base Slab CH 4149.5 - 4145 = 4.5m	7d/wk-1a	10d	13-Apr-15 08	22-Apr-15 18	26d			■ EB From East, Base Slab CH 4149.5 - 4145 = 4.5m					
A9900	EB From East, Base Slab CH 4145 - 4135 = 10m/bay	7d/wk-1a	10d	04-May-15 08	13-May-15 18	16d			■ EB From East, Base Slab CH 4145 - 4135 = 10m/bay					
A9895	EB From East, Base Slab CH 4135 - 4125 = 10m/bay	7d/wk-1a	10d	24-May-15 08	02-Jun-15 18	6d			■ EB From East, Base Slab CH 4135 - 4125 = 10m/bay					
A9890	EB From East, Base Slab CH 4125 - 4115 = 10m/bay	7d/wk-1a	10d	09-Jun-15 08	18-Jun-15 18	0d			■ EB From East, Base Slab CH 4125 - 4115 = 10m/bay					
A9885	EB From East, Base Slab CH 4115 - 4105 = 10m/bay	7d/wk-1a	10d	19-Jun-15 08	29-Jun-15 18	0d			■ EB From East, Base Slab CH 4115 - 4105 = 10m/bay					
A9880	EB From East, Base Slab CH 4105 - 4095 = 10m/bay	7d/wk-1a	10d	30-Jun-15 08	10-Jul-15 18	0d			■ EB From East, Base Slab CH 4105 - 4095 = 10m/bay					
Lining (5m/bay, 15m separation with base slab)														
A9065	EB From West, Lining CH 3990 - 3995 = 1bay	7d/wk-1a	10d	03-Feb-15 08	12-Feb-15 18	4d			■ EB From West, Lining CH 3990 - 3995 = 1bay					
A9005	EB From West, Lining CH 3995 - 4000 = 1bay	7d/wk-1a	10d	13-Feb-15 08	25-Feb-15 18	4d			■ EB From West, Lining CH 3995 - 4000 = 1bay					
A9090	EB From West, Lining CH 4000 - 4005 = 1bay	7d/wk-1a	10d	26-Feb-15 08	07-Mar-15 18	4d			■ EB From West, Lining CH 4000 - 4005 = 1bay					

- Summary Bar
- Actual Level of Effort
- Actual Work
- Remaining Work
- Critical Remaining Work
- Milestone

11 of 18

China State Construction Engineering (Hong Kong) Ltd

Contract No. HY/2009/15 - Central Wan Chai By Pass - Tunnel (Causeway Bay Typhoon Shelter Section)

WORKS PROGRAMME REV. M

Prepared by William Caluza

Date	Revision	Checked	Approved
26-Sep...	1st submission		



中國建築工程(香港)有限公司
CHINA STATE CONSTRUCTION ENGINEERING (HONG KONG) LTD.

Activity ID	Activity Name	Calendar	Original Duration	Start	Finish	Total Float	2015				2016		
							Q4	Q1	Q2	Q3	Q4	Q1	Q2
A9050	EB From West, Lining CH 4005 - 4010 = 1bay	7d/wk-1a	10d	08-Mar-15 08	17-Mar-15 18	4d			■ EB From West, Lining CH 4005 - 4010 = 1bay				
A9055	EB From West, Lining CH 4010 - 4015 = 1bay	7d/wk-1a	10d	18-Mar-15 08	27-Mar-15 18	4d			■ EB From West, Lining CH 4010 - 4015 = 1bay				
A9080	EB From West, Lining CH 4015 - 4020 = 1bay	7d/wk-1a	10d	26-Mar-15 08	05-Apr-15 18	4d			■ EB From West, Lining CH 4015 - 4020 = 1bay				
A9070	EB From West, Lining CH 4020 - 4025 = 1bay	7d/wk-1a	10d	03-Apr-15 08	13-Apr-15 18	4d			■ EB From West, Lining CH 4020 - 4025 = 1bay				
A9075	EB From West, Lining CH 4025 - 4030 = 1bay	7d/wk-1a	10d	12-Apr-15 08	21-Apr-15 18	4d			■ EB From West, Lining CH 4025 - 4030 = 1bay				
A9080	EB From West, Lining CH 4030 - 4035 = 1bay	7d/wk-1a	10d	20-Apr-15 08	29-Apr-15 18	4d			■ EB From West, Lining CH 4030 - 4035 = 1bay				
A9085	EB From West, Lining CH 4035 - 4040 = 1bay	7d/wk-1a	10d	28-Apr-15 08	08-May-15 18	4d			■ EB From West, Lining CH 4035 - 4040 = 1bay				
A9015	EB From West, Lining CH 4040 - 4045 = 1bay	7d/wk-1a	10d	07-May-15 08	16-May-15 18	4d			■ EB From West, Lining CH 4040 - 4045 = 1bay				
A9020	EB From West, Lining CH 4045 - 4050 = 1bay	7d/wk-1a	10d	15-May-15 08	24-May-15 18	4d			■ EB From West, Lining CH 4045 - 4050 = 1bay				
A9025	EB From West, Lining CH 4050 - 4055 = 1bay	7d/wk-1a	10d	23-May-15 08	01-Jun-15 18	4d			■ EB From West, Lining CH 4050 - 4055 = 1bay				
A9030	EB From West, Lining CH 4055 - 4060 = 1bay	7d/wk-1a	10d	31-May-15 08	09-Jun-15 18	4d			■ EB From West, Lining CH 4055 - 4060 = 1bay				
A9035	EB From West, Lining CH 4060 - 4065 = 1bay	7d/wk-1a	10d	07-Jun-15 08	16-Jun-15 18	4d			■ EB From West, Lining CH 4060 - 4065 = 1bay				
A9040	EB From West, Lining CH 4065 - 4070 = 1bay	7d/wk-1a	10d	14-Jun-15 08	24-Jun-15 18	4d			■ EB From West, Lining CH 4065 - 4070 = 1bay				
A9045	EB From West, Lining CH 4070 - 4075 = 1bay	7d/wk-1a	10d	25-Jun-15 08	05-Jul-15 18	0d			■ EB From West, Lining CH 4070 - 4075 = 1bay				
A8955	EB From West, Lining CH 4075 - 4080 = 1bay	7d/wk-1a	10d	30-Jun-15 08	10-Jul-15 18	0d			■ EB From West, Lining CH 4075 - 4080 = 1bay				
A8960	EB From West, Lining CH 4080 - 4085 = 1bay	7d/wk-1a	5d	11-Jul-15 08	15-Jul-15 18	0d			■ EB From West, Lining CH 4080 - 4085 = 1bay				
A8970	EB From West, Lining CH 4085 - 4090 = 1bay	7d/wk-1a	5d	16-Jul-15 08	20-Jul-15 18	0d			■ EB From West, Lining CH 4085 - 4090 = 1bay				
A8975	EB From West, Lining CH 4090 - 4095 = 1bay	7d/wk-1a	5d	21-Jul-15 08	25-Jul-15 18	0d			■ EB From West, Lining CH 4090 - 4095 = 1bay				
A8980	EB From West, Lining CH 4095 - 4100 = 1bay	7d/wk-1a	5d	26-Jul-15 08	30-Jul-15 18	0d			■ EB From West, Lining CH 4095 - 4100 = 1bay				
A8985	EB From West, Lining CH 4100 - 4105 = 1bay	7d/wk-1a	5d	31-Jul-15 08	04-Aug-15 18	0d			■ EB From West, Lining CH 4100 - 4105 = 1bay				
A8990	EB From West, Lining CH 4105 - 4110 = 1bay	7d/wk-1a	5d	05-Aug-15 08	09-Aug-15 18	0d			■ EB From West, Lining CH 4105 - 4110 = 1bay				
A8995	EB From West, Lining CH 4110 - 4115 = 1bay	7d/wk-1a	5d	10-Aug-15 08	14-Aug-15 18	0d			■ EB From West, Lining CH 4110 - 4115 = 1bay				
A9000	EB From West, Lining CH 4115 - 4120 = 1bay	7d/wk-1a	5d	15-Aug-15 08	19-Aug-15 18	0d			■ EB From West, Lining CH 4115 - 4120 = 1bay				
A9010	EB From West, Lining CH 4120 - 4125 = 1bay	7d/wk-1a	5d	20-Aug-15 08	24-Aug-15 18	0d			■ EB From West, Lining CH 4120 - 4125 = 1bay				
A8965	EB From West, Lining CH 4125 - 4130 = 1bay	7d/wk-1a	5d	25-Aug-15 08	29-Aug-15 18	0d			■ EB From West, Lining CH 4125 - 4130 = 1bay				
A8935	EB From West, Lining CH 4130 - 4135 = 1bay	7d/wk-1a	5d	30-Aug-15 08	03-Sep-15 18	0d			■ EB From West, Lining CH 4130 - 4135 = 1bay				
A8940	EB From West, Lining CH 4135 - 4140 = 1bay	7d/wk-1a	5d	04-Sep-15 08	08-Sep-15 18	0d			■ EB From West, Lining CH 4135 - 4140 = 1bay				
A8945	EB From West, Lining CH 4140 - 4145 = 1bay	7d/wk-1a	5d	09-Sep-15 08	13-Sep-15 18	0d			■ EB From West, Lining CH 4140 - 4145 = 1bay				
A8950	EB From West, Lining CH 4145 - 4149.5 = 4.5m	7d/wk-1a	5d	14-Sep-15 08	18-Sep-15 18	0d			■ EB From West, Lining CH 4145 - 4149.5 = 4.5m				

- Summary Bar
- Actual Level of Effort
- Actual Work
- Remaining Work
- Critical Remaining Work
- ◆ Milestone

12 of 18

China State Construction Engineering (Hong Kong) Ltd

Contract No. HY/2009/15 - Central Wan Chai By Pass - Tunnel (Causeway Bay Typhoon Shelter Section)

WORKS PROGRAMME REV. M

Prepared by William Caluza			
Date	Revision	Checked	Approved
26-Sep-...	1st submission		



Activity ID	Activity Name	Calendar	Original Duration	Start	Finish	Total Float	2015				2016					
							Q4	Q1	Q2	Q3	Q4	Q1	Q2	Q3		
OHVD(10m/bay) / Utility Trough																
A9095	EB From West OHVD and utility trough =, 167= 17 bays @ 10m/bay @ 7d/bay	7d/wk-1a	120d	03-Jul-15 08	02-Nov-15 18	0d										
WB Outer Tunnel Excavation																
From West (TPCWAE)																
Outer Heading Excavation (2d/m, 24h/day work shift, 7d/week, no work on statutory holiday)																
A9651	WB, Outer Heading From West, CH 4085- 4092.5 = 7.5m @ 2d/m	7d/wk-1a	15d	13-Sep-14 08 A	30-Sep-14 18	163d										
Outer Bench Excavation (1.5d-2d/m, 20m separation with heading)																
A9680	WB, Outer Bench From West, CH 4025- 4035 = 10m	7d/wk-1a	15d	12-Oct-14 08	26-Oct-14 18	163d										
A9665	WB, Outer Bench From West, CH 4035- 4045 = 10m	7d/wk-1a	15d	27-Oct-14 08	10-Nov-14 18	163d										
A9670	WB, Outer Bench From West, CH 4045- 4055 = 10m	7d/wk-1a	15d	11-Nov-14 08	25-Nov-14 18	163d										
A9675	WB, Outer Bench From West, CH 4055- 4065 = 10m	7d/wk-1a	15d	26-Nov-14 08	10-Dec-14 18	163d										
A9700	WB, Outer Bench From West, CH 4065- 4075 = 10m	7d/wk-1a	15d	11-Dec-14 08	26-Dec-14 18	163d										
A9701	WB, Outer Bench From West, CH 4075- 4082.5 = 7.5m	7d/wk-1a	15d	27-Dec-14 08	11-Jan-15 18	163d										
From East (TS4)																
Outer Heading Excavation (2d/m, 24h/day work shift, 7d/week, no work on statutory holiday)																
A9730	WB, Outer Heading From East, CH 4105- 4092.5 = 12.5m @2d/m	7d/wk-1a	25d	30-Aug-14 08 A	30-Sep-14 18	168d										
Outer Bench Excavation (1.5d-2d/m, 20m separation with heading)																
A9740	WB, Outer Bench From East, CH 4136- 4135 = 1m	7d/wk-1a	2d	12-Oct-14 08	13-Oct-14 18	168d										
A9770	WB, Outer Bench From East, CH 4135- 4125 = 10m	7d/wk-1a	15d	14-Oct-14 08	28-Oct-14 18	168d										
A9745	WB, Outer Bench From East, CH 4125- 4115 = 10m	7d/wk-1a	15d	28-Oct-14 08	11-Nov-14 18	168d										
A9750	WB, Outer Bench From East, CH 4115- 4105 = 10m	7d/wk-1a	15d	11-Nov-14 08	25-Nov-14 18	168d										
A9755	WB, Outer Bench From East, CH 4105- 4095 = 10m	7d/wk-1a	15d	26-Nov-14 08	10-Dec-14 18	168d										
A9760	WB, Outer Bench From East, CH 4095- 4082.5 = 12.5m	7d/wk-1a	25d	11-Dec-14 08	06-Jan-15 18	168d										
WB (Inner Tunnel Excavation + Lining)																
From West (TPCWAE)																
Inner Heading Excavation (2-3d/m, 24h/day work shift, 7d/week, no work on statutory holiday)																
A9130	WB, Inner Heading From West, CH 3993- 4005 = 12m @3d/m	7d/wk-1a	50d	29-Sep-14 08	18-Nov-14 18	0d										
A9135	WB, Inner Heading From West, CH 4005- 4015 = 10m @2d/m	7d/wk-1a	20d	19-Nov-14 08	08-Dec-14 18	0d										
A9140	WB, Inner Heading From West, CH 4015- 4025 = 10m @2d/m	7d/wk-1a	20d	09-Dec-14 08	29-Dec-14 18	0d										

-  Summary Bar
-  Actual Level of Effort
-  Actual Work
-  Remaining Work
-  Critical Remaining Work
-  Milestone

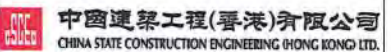
13 of 18

China State Construction Engineering (Hong Kong) Ltd

Contract No. HY/2009/15 - Central Wan Chai By Pass - Tunnel (Causeway Bay Typhoon Shelter Section)

WORKS PROGRAMME REV. M

Prepared by William Caluza			
Date	Revision	Checked	Approved
26-Sep...	1st submission		



Activity ID	Activity Name	Calendar	Original Duration	Start	Finish	Total Float	2015				2016			
							Q4	Q1	Q2	Q3	Q4	Q1	Q2	Q3
A9100	WB,Inner Heading From West, CH 4025- 4035 = 10m @2d/m	7d/wk-1a	20d	30-Dec-14 08	19-Jan-15 18	0d		■	WB,Inner Heading From West, CH 4025- 4035 = 10m @2d/m					
A9105	WB,Inner Heading From West, CH 4035- 4045 = 10m @2d/m	7d/wk-1a	20d	20-Jan-15 08	08-Feb-15 18	0d		■	WB,Inner Heading From West, CH 4035- 4045 = 10m @2d/m					
A9110	WB,Inner Heading From West, CH 4045- 4055 = 10m @2d/m	7d/wk-1a	20d	09-Feb-15 08	03-Mar-15 18	0d		■	WB,Inner Heading From West, CH 4045- 4055 = 10m @2d/m					
A9115	WB,Inner Heading From West, CH 4055- 4065 = 10m @ 2d/m	7d/wk-1a	20d	04-Mar-15 08	23-Mar-15 18	0d		■	WB,Inner Heading From West, CH 4055- 4065 = 10m @ 2d/m					
A9120	WB,Inner Heading From West, CH 4065- 4075 = 10m, @ 2d/m	7d/wk-1a	20d	24-Mar-15 08	13-Apr-15 18	0d		■	WB,Inner Heading From West, CH 4065- 4075 = 10m, @ 2d/m					
A9125	WB,Inner Heading From West, CH 4075- 4085 = 10m @ 2d/m	7d/wk-1a	20d	14-Apr-15 08	04-May-15 18	0d		■	WB,Inner Heading From West, CH 4075- 4085 = 10m @ 2d/m					
Inner Bench Excavation (1.5d-2d/m, 20m separation with heading)														
A9180	WB,Inner Bench From West, CH 3993- 4005 = 12m	7d/wk-1a	18d	30-Dec-14 08	17-Jan-15 18	27d		■	WB,Inner Bench From West, CH 3993- 4005 = 12m					
A9205	WB,Inner Bench From West, CH 4005- 4015 = 10m	7d/wk-1a	15d	20-Jan-15 08	03-Feb-15 18	25d		■	WB,Inner Bench From West, CH 4005- 4015 = 10m					
A9190	WB,Inner Bench From West, CH 4015- 4025 = 10m	7d/wk-1a	15d	09-Feb-15 08	26-Feb-15 18	20d		■	WB,Inner Bench From West, CH 4015- 4025 = 10m					
A9185	WB,Inner Bench From West, CH 4025- 4035 = 10m	7d/wk-1a	15d	04-Mar-15 08	18-Mar-15 18	15d		■	WB,Inner Bench From West, CH 4025- 4035 = 10m					
A9155	WB,Inner Bench From West, CH 4035- 4045 = 10m	7d/wk-1a	15d	24-Mar-15 08	08-Apr-15 18	10d		■	WB,Inner Bench From West, CH 4035- 4045 = 10m					
A9160	WB,Inner Bench From West, CH 4045- 4055 = 10m	7d/wk-1a	15d	14-Apr-15 08	28-Apr-15 18	5d		■	WB,Inner Bench From West, CH 4045- 4055 = 10m					
A9165	WB,Inner Bench From West, CH 4055- 4065 = 10m	7d/wk-1a	15d	05-May-15 08	19-May-15 18	0d		■	WB,Inner Bench From West, CH 4055- 4065 = 10m					
A9170	WB,Inner Bench From West, CH 4065- 4075 = 10m	7d/wk-1a	15d	20-May-15 08	03-Jun-15 18	0d		■	WB,Inner Bench From West, CH 4065- 4075 = 10m					
A9175	WB,Inner Bench From West, CH 4075- 4085 = 10m	7d/wk-1a	15d	04-Jun-15 08	18-Jun-15 18	0d		■	WB,Inner Bench From West, CH 4075- 4085 = 10m					
From East (TS4)														
Inner Heading Excavation (2d/m, 24h/day work shift, 7d/week, no work on statutory holiday)														
A9210	WB,Inner Heading From East, CH 4135- 4125 = 10m @2d/m	7d/wk-1a	20d	14-Jan-15 08	02-Feb-15 18	6d		■	WB,Inner Heading From East, CH 4135- 4125 = 10m @2d/m					
A9215	WB,Inner Heading From East, CH 4125- 4115 = 10m @2d/m	7d/wk-1a	20d	03-Feb-15 08	25-Feb-15 18	6d		■	WB,Inner Heading From East, CH 4125- 4115 = 10m @2d/m					
A9230	WB,Inner Heading From East, CH 4115- 4105 = 10m @2d/m	7d/wk-1a	20d	26-Feb-15 08	17-Mar-15 18	6d		■	WB,Inner Heading From East, CH 4115- 4105 = 10m @2d/m					
A9232	WB,Inner Heading From East, CH 4105- 4095 = 10m @2d/m	7d/wk-1a	20d	18-Mar-15 08	07-Apr-15 18	6d		■	WB,Inner Heading From East, CH 4105- 4095 = 10m @2d/m					
A9225	WB,Inner Heading From East, CH 4095- 4085 = 10m @2d/m	7d/wk-1a	20d	08-Apr-15 08	27-Apr-15 18	6d		■	WB,Inner Heading From East, CH 4095- 4085 = 10m @2d/m					
Inner Bench Excavation (1.5d-2d/m, 20m separation with heading)														
A9235	WB,Inner Bench From East, CH 4135- 4125 = 10m	7d/wk-1a	15d	18-Mar-15 08	01-Apr-15 18	16d		■	WB,Inner Bench From East, CH 4135- 4125 = 10m					
A9240	WB,Inner Bench From East, CH 4125- 4115 = 10m	7d/wk-1a	15d	08-Apr-15 08	22-Apr-15 18	11d		■	WB,Inner Bench From East, CH 4125- 4115 = 10m					
A9245	WB,Inner Bench From East, CH 4115- 4105 = 10m	7d/wk-1a	15d	28-Apr-15 08	13-May-15 18	6d		■	WB,Inner Bench From East, CH 4115- 4105 = 10m					
A9247	WB,Inner Bench From East, CH 4105- 4095 = 10m	7d/wk-1a	15d	14-May-15 08	28-May-15 18	6d		■	WB,Inner Bench From East, CH 4105- 4095 = 10m					
A9250	WB,Inner Bench From East, CH 4095- 4085 = 10m	7d/wk-1a	15d	29-May-15 08	12-Jun-15 18	6d		■	WB,Inner Bench From East, CH 4095- 4085 = 10m					

- Summary Bar
- Actual Level of Effort
- Actual Work
- Remaining Work
- Critical Remaining Work
- ◆ Milestone

14 of 18

China State Construction Engineering (Hong Kong) Ltd

Contract No. HY/2009/15 - Central Wan Chai By Pass - Tunnel (Causeway Bay Typhoon Shelter Section)

WORKS PROGRAMME REV. M

Prepared by William Caluza

Date	Revision	Checked	Approved
26-Sep...	1st submission		



中國建築工程(香港)有限公司
CHINA STATE CONSTRUCTION ENGINEERING (HONG KONG) LTD.

Activity ID	Activity Name	Calendar	Original Duration	Start	Finish	Total Float	2015				2016						
							Q4	Q1	Q2	Q3	Q4	Q1	Q2	Q3			
Tunnel Lining Works																	
From West Base Slab (10m/bay, 10m separation with benching excavation)																	
A9295	WB From West, Base Slab CH 3990 - 3995 = 5m bay	7d/wk-1a	10d	18-Jan-15 08	27-Jan-15 18	37d											
A9320	WB From West, Base Slab CH 3995 - 4005 = 10m/bay	7d/wk-1a	10d	04-Feb-15 08	13-Feb-15 18	30d											
A9255	WB From West, Base Slab CH 4005 - 4015 = 10m/bay	7d/wk-1a	10d	27-Feb-15 08	08-Mar-15 18	50d											
A9280	WB From West, Base Slab CH 4015 - 4025 = 10m/bay	7d/wk-1a	10d	19-Mar-15 08	28-Mar-15 18	40d											
A9265	WB From West, Base Slab CH 4025 - 4035 = 10m/bay	7d/wk-1a	10d	09-Apr-15 08	18-Apr-15 18	30d											
A9300	WB From West, Base Slab CH 4035 - 4045 = 10m/bay	7d/wk-1a	10d	29-Apr-15 08	09-May-15 18	20d											
A9325	WB From West, Base Slab CH 4045 - 4055 = 10m/bay	7d/wk-1a	10d	20-May-15 08	29-May-15 18	10d											
A9305	WB From West, Base Slab CH 4055 - 4065 = 10m/bay	7d/wk-1a	10d	04-Jun-15 08	13-Jun-15 18	5d											
A9310	WB From West, Base Slab CH 4065 - 4075 = 10m/bay	7d/wk-1a	10d	19-Jun-15 08	29-Jun-15 18	0d											
A9315	WB From West, Base Slab CH 4075 - 4080 = 5m	7d/wk-1a	10d	30-Jun-15 08	10-Jul-15 18	0d											
From East Base Slab (10m/bay, 10m separation with benching excavation)																	
A9960	WB From East, Base Slab CH 4135 - 4125 = 10m/bay	7d/wk-1a	10d	23-Apr-15 08	03-May-15 18	26d											
A9955	WB From East, Base Slab CH 4125 - 4115 = 10m/bay	7d/wk-1a	10d	14-May-15 08	23-May-15 18	16d											
A9950	WB From East, Base Slab CH 4115 - 4105 = 10m/bay	7d/wk-1a	10d	29-May-15 08	07-Jun-15 18	11d											
A9945	WB From East, Base Slab CH 4105 - 4095 = 10m/bay	7d/wk-1a	10d	13-Jun-15 08	23-Jun-15 18	6d											
A9940	WB From East, Base Slab CH 4095 - 4085 = 10m/bay	7d/wk-1a	10d	24-Jun-15 08	04-Jul-15 18	6d											
A9941	WB From East, Base Slab CH 4085 - 4080 = 5m	7d/wk-1a	10d	05-Jul-15 08	14-Jul-15 18	6d											
Lining (5m/bay, 10m separation with base slab)																	
A9430	WB From West, Lining CH 3990 - 3995 = 1bay	7d/wk-1a	7d	14-Feb-15 08	23-Feb-15 18	30d											
A9470	WB From West, Lining CH 3995 - 4000 = 1bay	7d/wk-1a	7d	24-Feb-15 08	02-Mar-15 18	30d											
A9435	WB From West, Lining CH 4000 - 4005 = 1bay	7d/wk-1a	7d	03-Mar-15 08	09-Mar-15 18	30d											
A9360	WB From West, Lining CH 4005 - 4010 = 1bay	7d/wk-1a	7d	10-Mar-15 08	16-Mar-15 18	30d											
A9365	WB From West, Lining CH 4010 - 4015 = 1bay	7d/wk-1a	7d	17-Mar-15 08	23-Mar-15 18	30d											
A9370	WB From West, Lining CH 4015 - 4020 = 1bay	7d/wk-1a	7d	24-Mar-15 08	30-Mar-15 18	30d											
A9375	WB From West, Lining CH 4020 - 4025 = 1bay	7d/wk-1a	7d	31-Mar-15 08	07-Apr-15 18	30d											
A9380	WB From West, Lining CH 4025 - 4030 = 1bay	7d/wk-1a	7d	08-Apr-15 08	14-Apr-15 18	30d											
A9385	WB From West, Lining CH 4030 - 4035 = 1bay	7d/wk-1a	7d	15-Apr-15 08	21-Apr-15 18	30d											

- Summary Bar
- ▬ Actual Level of Effort
- ▬ Actual Work
- ▬ Remaining Work
- ▬ Critical Remaining Work
- ◆ Milestone

15 of 18

China State Construction Engineering (Hong Kong) Ltd

Contract No. HY/2009/15 - Central Wan Chai By Pass - Tunnel (Causeway Bay Typhoon Shelter Section)

WORKS PROGRAMME REV. M

Prepared by William Kaluza

Date	Revision	Checked	Approved
26-Sep...	1st submission		



中國建築工程(香港)有限公司
CHINA STATE CONSTRUCTION ENGINEERING (HONG KONG) LTD.

Activity ID	Activity Name	Calendar	Original Duration	Start	Finish	Total Float	2015				2016		
							Q4	Q1	Q2	Q3	Q4	Q1	Q2
A9390	WB From West, Lining CH 4035 - 4040 = 1bay	7d/wk-1a	7d	22-Apr-15 08	28-Apr-15 18	30d			■ WB From West, Lining CH 4035 - 4040 = 1bay				
A9330	WB From West, Lining CH 4040 - 4045 = 1bay	7d/wk-1a	7d	29-Apr-15 08	06-May-15 18	30d			■ WB From West, Lining CH 4040 - 4045 = 1bay				
A9335	WB From West, Lining CH 4045 - 4050 = 1bay	7d/wk-1a	7d	07-May-15 08	13-May-15 18	30d			■ WB From West, Lining CH 4045 - 4050 = 1bay				
A9340	WB From West, Lining CH 4050 - 4055 = 1bay	7d/wk-1a	7d	14-May-15 08	20-May-15 18	30d			■ WB From West, Lining CH 4050 - 4055 = 1bay				
A9345	WB From West, Lining CH 4055 - 4060 = 1bay	7d/wk-1a	7d	21-May-15 08	27-May-15 18	30d			■ WB From West, Lining CH 4055 - 4060 = 1bay				
A9350	WB From West, Lining CH 4060 - 4065 = 1bay	7d/wk-1a	7d	28-May-15 08	03-Jun-15 18	30d			■ WB From West, Lining CH 4060 - 4065 = 1bay				
A9355	WB From West, Lining CH 4065 - 4070 = 1bay	7d/wk-1a	5d	04-Jun-15 08	08-Jun-15 18	30d			■ WB From West, Lining CH 4065 - 4070 = 1bay				
A9415	WB From West, Lining CH 4070 - 4075 = 1bay	7d/wk-1a	5d	11-Jul-15 08	15-Jul-15 18	0d			■ WB From West, Lining CH 4070 - 4075 = 1bay				
A9475	WB From West, Lining CH 4075 - 4080 = 1bay	7d/wk-1a	5d	16-Jul-15 08	20-Jul-15 18	0d			■ WB From West, Lining CH 4075 - 4080 = 1bay				
A9440	WB From West, Lining CH 4080 - 4085 = 1bay	7d/wk-1a	5d	21-Jul-15 08	25-Jul-15 18	0d			■ WB From West, Lining CH 4080 - 4085 = 1bay				
A9445	WB From West, Lining CH 4085 - 4090 = 1bay	7d/wk-1a	5d	26-Jul-15 08	30-Jul-15 18	0d			■ WB From West, Lining CH 4085 - 4090 = 1bay				
A9450	WB From West, Lining CH 4090 - 4095 = 1bay	7d/wk-1a	5d	31-Jul-15 08	04-Aug-15 18	0d			■ WB From West, Lining CH 4090 - 4095 = 1bay				
A9455	WB From West, Lining CH 4095 - 4100 = 1bay	7d/wk-1a	5d	05-Aug-15 08	09-Aug-15 18	0d			■ WB From West, Lining CH 4095 - 4100 = 1bay				
A9420	WB From West, Lining CH 4100 - 4105 = 1bay	7d/wk-1a	5d	10-Aug-15 08	14-Aug-15 18	0d			■ WB From West, Lining CH 4100 - 4105 = 1bay				
A9425	WB From West, Lining CH 4105 - 4110 = 1bay	7d/wk-1a	5d	15-Aug-15 08	19-Aug-15 18	0d			■ WB From West, Lining CH 4105 - 4110 = 1bay				
A9460	WB From West, Lining CH 4110 - 4115 = 1bay	7d/wk-1a	5d	20-Aug-15 08	24-Aug-15 18	0d			■ WB From West, Lining CH 4110 - 4115 = 1bay				
A9465	WB From West, Lining CH 4115 - 4120 = 1bay	7d/wk-1a	5d	25-Aug-15 08	29-Aug-15 18	0d			■ WB From West, Lining CH 4115 - 4120 = 1bay				
A9395	WB From West, Lining CH 4120 - 4125 = 1bay	7d/wk-1a	5d	30-Aug-15 08	03-Sep-15 18	0d			■ WB From West, Lining CH 4120 - 4125 = 1bay				
A9400	WB From West, Lining CH 4125 - 4130 = 1bay	7d/wk-1a	5d	04-Sep-15 08	08-Sep-15 18	0d			■ WB From West, Lining CH 4125 - 4130 = 1bay				
A9405	WB From West, Lining CH 4130 - 4135 = 1bay	7d/wk-1a	5d	09-Sep-15 08	13-Sep-15 18	0d			■ WB From West, Lining CH 4130 - 4135 = 1bay				
A9410	WB From West, Lining CH 4135 - 4136.5 = 1bay	7d/wk-1a	5d	14-Sep-15 08	18-Sep-15 18	0d			■ WB From West, Lining CH 4135 - 4136.5 = 1bay				
OHVD(10m/bay) / Utility Trough													
A9480	WB From West OHVD and utility trough =, 153= 16 bays @ 10m/bay @ 7d/bay	7d/wk-1a	115d	08-Jul-15 08	02-Nov-15 18	0d			■ WB From West OHVD and utility trough =, 153= 16 bays @ 10				
Completion of KD10- Section 5													
A8445	KD10- Section 2: Completion of Mined Tunnel Works (orig. Target KD10- 2 Nov 2015)	7d/wk-2	0d		02-Nov-15 18*	0d							◆ KD10- Section 2: Completion of Mined Tunnel Works (orig. Tar
Interface works with other Contracts													
S5_60115	Handover TZ6 to MTR	7d/wk-2	0d		30-Sep-14 18	-249d			◆ Handover TZ6 to MTR				
S6_5283	Handover TZ4 to CWB(T2)	7d/wk-2	0d		10-Nov-14 18	-290d			◆ Handover TZ4 to CWB(T2)				
S6_5275	Provide access to CWB (CC) Contractor- TS1 & TS2	7d/wk-2	0d		21-Nov-14 18*	-85d			◆ Provide access to CWB (CC) Contractor- TS1 & TS2				

Summary Bar
 Actual Level of Effort
 Actual Work
 Remaining Work
 Critical Remaining Work
 Milestone

16 of 18

China State Construction Engineering (Hong Kong) Ltd
 Contract No. HY/2009/15 - Central Wan Chai By Pass - Tunnel (Causeway Bay Typhoon Shelter Section)
WORKS PROGRAMME REV. M

Prepared by William Caluza			
Date	Revision	Checked	Approved
26-Sep...	1st submission		

中國建築工程(香港)有限公司
 CHINA STATE CONSTRUCTION ENGINEERING (HONG KONG) LTD.

Activity ID	Activity Name	Calendar	Original Duration	Start	Finish	Total Float	2015				2016			
							Q4	Q1	Q2	Q3	Q4	Q1	Q2	Q3
SB_5280	Provide access to CWB (CC) Contractor- TS4, TPCWA, Mined Tunnel	7d/wk-2	0d		31-Mar-16 18*	-124d								◆ Provide access to CWB (CC) C
Stage and Section Completion														
KD_5735	KD8 - Completion of Section 3, (1326d)	7d/wk-2	0d		30-Sep-14 18*	-86d	◆ KD8 - Completion of Section 3, (1326d)							
KD_5720	KD5 - Achievement of Stage 5, (1152d)	7d/wk-2	0d		16-Oct-14 18*	-323d	◆ KD5 - Achievement of Stage 5, (1152d)							
KD_5760	KD13 - Completion of Section 7B, (1152d)	7d/wk-2	0d		17-Nov-14 18*	-353d	◆ KD13 - Completion of Section 7B, (1152d)							
KD_5730	KD7 - Completion of Section 2, (1152d)	7d/wk-2	0d		17-Nov-14 18*	-297d	◆ KD7 - Completion of Section 2, (1152d)							
KD_5740	KD9 - Completion of Section 4, (1739d)	7d/wk-2	0d		10-Nov-15 18*	-132d							◆ KD9 - Completion of Section 4, (1739d)	
KD_5745	KD10 - Completion of Section 5, (1863d)	7d/wk-2	0d		25-Mar-16 18	-144d							◆ KD10 - Completion of Section 5, (
KD_5750	KD11 - Completion of Section 6, (1949d)	7d/wk-2	0d		23-May-16 18*	-121d							◆ KD11 - Completion of	
Portion Handover Date														
CD_5685	Portion Handover - Portion IV(4), KD8 +28	7d/wk-2	0d		28-Oct-14 18*	-50d	◆ Portion Handover - Portion IV(4), KD8 +28							
CD_5680	Portion Handover - Portion V (5), KD8 +28	7d/wk-2	0d		28-Oct-14 18*	-50d	◆ Portion Handover - Portion V (5), KD8 +28							
CD_5695	Portion Handover - Portion VI (6), KD8 +28	7d/wk-2	0d		28-Oct-14 18*	-50d	◆ Portion Handover - Portion VI (6), KD8 +28							
CD_5735	Portion Handover - Portion XIII (13B), KD8 +28	7d/wk-2	0d		28-Oct-14 18*	-50d	◆ Portion Handover - Portion XIII (13B), KD8 +28							
CD_5790	Portion Handover - Portion XXII (22), KD8 +28	7d/wk-2	0d		28-Oct-14 18*	-50d	◆ Portion Handover - Portion XXII (22), KD8 +28							
CD_5670	Portion Handover - Portion III (3), KD8 +28	7d/wk-2	0d		28-Oct-14 18*	-50d	◆ Portion Handover - Portion III (3), KD8 +28							
CD_5720	Portion Handover - Portion XIII (13A), KD7 +28	7d/wk-2	0d		15-Dec-14 18*	-79d	◆ Portion Handover - Portion XIII (13A), KD7 +28							
CD_5705	Portion Handover - Portion VIII (8), KD7 +28	7d/wk-2	0d		15-Dec-14 18*	-79d	◆ Portion Handover - Portion VIII (8), KD7 +28							
CD_5730	Portion Handover - Portion XIV (14A), KD7 +28	7d/wk-2	0d		15-Dec-14 18*	-79d	◆ Portion Handover - Portion XIV (14A), KD7 +28							
CD_5740	Portion Handover - Portion XV (15), KD7 +28	7d/wk-2	0d		15-Dec-14 18*	-79d	◆ Portion Handover - Portion XV (15), KD7 +28							
CD_5805	Portion Handover - Portion XXIII (23), KD7 +28	7d/wk-2	0d		15-Dec-14 18*	-79d	◆ Portion Handover - Portion XXIII (23), KD7 +28							
CD_5775	Portion Handover - Portion XVIII (18), KD10 +28	7d/wk-2	0d		30-Nov-15 18*	0d							◆ Portion Handover - Portion XVIII (18), KD10 +28	
CD_5710	Portion Handover - Portion XI (11), KD9 +28	7d/wk-2	0d		27-Dec-15 18*	0d							◆ Portion Handover - Portion XI (11), KD9 +28	
CD_5700	Portion Handover - Portion IX (9), KD10 +28	7d/wk-2	0d		22-Apr-16 18*	-52d							◆ Portion Handover - Portion	
CD_5745	Portion Handover - Portion XIV (14B), KD10 +28	7d/wk-2	0d		22-Apr-16 18*	-52d							◆ Portion Handover - Portion	
CD_5755	Portion Handover - Portion XVI (16), KD10 +28	7d/wk-2	0d		22-Apr-16 18*	-52d							◆ Portion Handover - Portion	
CD_5750	Portion Handover - Portion XVII (17), KD10 +28	7d/wk-2	0d		22-Apr-16 18*	-52d							◆ Portion Handover - Portion	
CD_5760	Portion Handover - Portion XIX (19), KD10 +28	7d/wk-2	0d		22-Apr-16 18*	-52d							◆ Portion Handover - Portion	
CD_5780	Portion Handover - Portion XX (20B), KD10 +28	7d/wk-2	0d		22-Apr-16 18*	-52d							◆ Portion Handover - Portion	

- █ Summary Bar
- ▬ Actual Level of Effort
- █ Actual Work
- █ Remaining Work
- █ Critical Remaining Work
- ◆ Milestone

17 of 18

China State Construction Engineering (Hong Kong) Ltd

Contract No. HY/2009/15 - Central Wan Chai By Pass - Tunnel (Causeway Bay Typhoon Shelter Section)

WORKS PROGRAMME REV. M

Prepared by William Caluza

Date	Revision	Checked	Approved
26-Sep...	1st submission		



中國建築工程(香港)有限公司
CHINA STATE CONSTRUCTION ENGINEERING (HONG KONG) LTD.

Activity ID	Activity Name	Calendar	Original Duration	Start	Finish	Total Float	2015				2016			
							Q4	Q1	Q2	Q3	Q4	Q1	Q2	Q3
CD_5690	Portion Handover - Portion VII (7), KD11 +28	7d/wk-2	0d		20-Jun-16 18	0d								◆ Portion Handov
CD_5725	Portion Handover - Portion XII (12), KD11 +28	7d/wk-2	0d		20-Jun-16 18	0d								◆ Portion Handov
CD_5715	Portion Handover - Portion X (10), KD11 +28	7d/wk-2	0d		20-Jun-16 18	0d								◆ Portion Handov
CD_5785	Portion Handover - Portion XXA (20A), KD11 +28	7d/wk-2	0d		20-Jun-16 18	0d								◆ Portion Handov
CD_5795	Portion Handover - Portion XXI (21), KD11 +28	7d/wk-2	0d		20-Jun-16 18	0d								◆ Portion Handov

- Summary Bar
- Actual Level of Effort
- Actual Work
- Remaining Work
- Critical Remaining Work
- ◆ ◆ Milestone

18 of 18

China State Construction Engineering (Hong Kong) Ltd

Contract No. HY/2009/15 - Central Wan Chai By Pass - Tunnel (Causeway Bay Typhoon Shelter Section)

WORKS PROGRAMME REV. M

Prepared by William Caluza			
Date	Revision	Checked	Approved
26-Sep...	1st submission		



中國建築工程(香港)有限公司
CHINA STATE CONSTRUCTION ENGINEERING (HONG KONG) LTD.

Activity ID	Activity Name	Orig Dur	Scheduled/Actual Start	Scheduled/Actual Finish	Total Float	Calendar	2015					
							Aug	Sep	Oct	Nov	Dec	
Three Months Rolling Programme 2015-08-20 (dd 20-Aug-15)												
Programme Milestones (Revised up to EOTO No.12 Issued on 15-Jun-15)												
Contractual Completion Dates												
KDC0170	Section 9B Works (2105 days) - CWB Structure (CH3400 Eastward) (3-Nov-15)	0		03-Nov-15*	0	Calendar Day						
Soft Landscaping & Establishment Key Dates												
KDC0150	Section 8D Works (1838 days) - Establishment Works in Area 8 (10-Feb-15)	0		20-Aug-15*	-192	Calendar Day						
Possession of Site												
PS0070	Possession of Portion 7 - Eastern Bulkhead	0	15-Sep-15*		-60	Calendar Day						
Preliminaries												
Interface with Others												
PRE0950	Permanent Diversion of Box Culvert M by HK2009/01	0		30-Aug-15*	-469	Calendar Day						
Critical Submission & Approval												
PRE-SUB-1000B	Temp Covered Walkway Capping Beam - Design Approval by AECOM	30	19-Jun-13 A	18-Sep-15	348	Calendar Day						
PRE-SUB-1010B	Temp Covered Walkway Cover System (PS30.5) - Design Approval by AECOM	30	12-Jun-14 A	15-Sep-15	348	Calendar Day						
CSD for CWB Tunnel												
PRE-CSD-2030B	Tunnel Portion 2 - Redesigned CWB Tunnel Structure Design Submission Approval by AECOM & GEO	60	16-Nov-13 A	28-Aug-15	67	Calendar Day						
PRE-CSD-3000B	Tunnel Portion 3&4 - Redesigned Temp D-Wall Submission Approval by AECOM & GEO	30	08-Jun-13 A	11-Sep-15	53	Calendar Day						
PRE-CSD-3010B	Tunnel Portion 3&4 - ELS Submission Approval by AECOM & GEO	60	17-Jan-14 A	18-Sep-15	-316	Calendar Day						
PRE-CSD-5000B	Tunnel Portion 5 - Temp D-Wall Submission Approval by AECOM & GEO	60	15-Aug-13 A	21-Sep-15	-389	Calendar Day						
PRE-CSD-5010B	Tunnel Portion 5 - ELS Submission Approval by AECOM & GEO	60	09-Apr-15 A	17-Oct-15	-363	Calendar Day						
Section 3 of the Works - Re-provisioning of Government Helipad and Public Toilet												
Outstanding Works												
S3-0070-1489	Reinstatement of armour rock, retaining walls & now covered walkway along Expo Drive East	254	11-Aug-12 A	01-May-16*	-287	Calendar Day						
Section 9B of the Works - CWB Tunnel Structure (CH3400 - CH3796)												
Tunnel Portion 1 (CH3500-CH3630)												
CWB Structural Works												
S9B-T1-4600	Remove Inclined Struts and King Posts (Bay 1 to Bay 6)	45	29-Jun-15 A	31-Aug-15	-43	HK Working Day						
S9B-T1-5106	Construct Roadside Barriers (Bay 1 to Bay 6)	30	19-Nov-15	23-Dec-15	-43	HK Working Day						
Tunnel Portion 2 (CH3425-CH3500)												
CWB Structural Works												
S9B-T2-5100	Construct Roadside Barriers (Bay 1 to Bay 6)	65	01-Sep-15	18-Nov-15	-43	HK Working Day						
Bay 1												
S9B-T2-B1-3260	Roof - Waterproofing	4	01-Sep-15*	04-Sep-15	-23	HK Working Day						
S9B-T2-B1-3270	Roof - Scaffolding Dismantling	3	20-Aug-15	22-Aug-15	14	HK Working Day						
Bay 2												
S9B-T2-B2-3210	Roof - Waterproofing	4	05-Sep-15	09-Sep-15	93	HK Working Day						
S9B-T2-B2-3220	Roof - Scaffolding Dismantling	3	20-Aug-15	22-Aug-15	14	HK Working Day						
Bay 3												
S9B-T2-B3-3210	Roof - Waterproofing	4	10-Sep-15	14-Sep-15	93	HK Working Day						
S9B-T2-B3-3220	Roof - Scaffolding Dismantling	3	20-Aug-15	22-Aug-15	14	HK Working Day						
Bay 4												
S9B-T2-B4-3180	Roof - Formwork	9	19-Jul-15 A	26-Aug-15	-14	HK Working Day						
S9B-T2-B4-3190	Roof - Rebar Fixing	10	27-Aug-15	07-Sep-15	-14	HK Working Day						
S9B-T2-B4-3200	Roof - Concrete & Curing	14	08-Sep-15	21-Sep-15	-17	Calendar Day						
S9B-T2-B4-3210	Roof - Waterproofing	4	22-Sep-15	25-Sep-15	83	HK Working Day						
S9B-T2-B4-3220	Roof - Scaffolding Dismantling	3	22-Sep-15	24-Sep-15	-14	HK Working Day						
Bay 5												
S9B-T2-B5-3110	OHVD Base Slab - Scaffolding Erection	4	19-Aug-15 A	21-Aug-15	-46	HK Working Day						
S9B-T2-B5-3120	OHVD Base Slab - Waterproofing to Upper Side Wall	3	20-Aug-15	22-Aug-15	-46	HK Working Day						
S9B-T2-B5-3130	OHVD Base Slab - Formwork	3	24-Aug-15	26-Aug-15	-46	HK Working Day						
S9B-T2-B5-3140	OHVD Base Slab - Rebar Fixing	4	27-Aug-15	31-Aug-15	-46	HK Working Day						
S9B-T2-B5-3150	OHVD Base Slab - Concrete, Curing & Formwork Dismantling	14	01-Sep-15	14-Sep-15	-54	Calendar Day						
S9B-T2-B5-3160	OHVD Hanger Wall - Formwork, Rebar & Concrete	3	04-Sep-15	07-Sep-15	-40	HK Working Day						
S9B-T2-B5-3170	Roof - Scaffolding Erection for Roof	7	15-Sep-15	22-Sep-15	-46	HK Working Day						

- ◆ Milestones
- ◆ Critical Milestones
- █ Current Works
- █ Critical Works

**CHUN WO - CRGL
JOINT VENTURE**

CEDD CONTRACT NO. HK/2009/02
WD II - Central Wanchai Bypass at Wan Chai East (Contract 2)
3-MONTH ROLLING PROGRAMME (dd 20-Aug-15)

Date	Revision	Checked	Approved
20-Aug-15	3MRP		

Activity ID	Activity Name	Original Duration	Start	Finish	2015			
					Sep	Oct	Nov	Dec
DWP-06 (A) - Three Months Rolling Programme_updated up to 20-Sep-15								
Works in TS3								
Works in TS3-East								
ELS								
TS3-East ELS Works								
TS3E_5660	ELS Layer 7 - Soft Excav + Strut installation	10	24-Aug-15 A	21-Sep-15 A	ELS Layer 7 - Soft Excav + Strut installation			
TS3E_5670	Excavation up to Formation Level (No Rock as Rock Head Level is far below F.L.)	6	03-Sep-15 A	22-Sep-15 A	Excavation up to Formation Level (No Rock as Rock Head Level is far below F.L.)			
Cut & Cover Tunnel Structure								
TS3-East CCT - Ch.4500.000 to Ch.4582.140								
TS3 East CCT - Blinding + Waterproofing								
TS3E_6515	TS3(E) Blinding - Bay 1 - 8	8	14-Sep-15 A	27-Sep-15	TS3(E) Blinding - Bay 1 - 8			
TS3E_6525	TS3(E) Waterproofing - Bay 1 - 8	12	22-Sep-15 A	01-Oct-15	TS3(E) Waterproofing - Bay 1 - 8			
TS3 East CCT - Base Slab + Drainage System								
TS3E_6570	CCT Base Slab - Bay 1 (Ch.4500.000 to Ch.4510.000)	8	23-Sep-15 A	01-Oct-15	CCT Base Slab - Bay 1 (Ch.4500.000 to Ch.4510.000)			
TS3E_6610	CCT Base Slab - Bay 5	8	30-Sep-15	07-Oct-15	CCT Base Slab - Bay 5			
TS3E_6580	CCT Base Slab - Bay 2	8	02-Oct-15	09-Oct-15	CCT Base Slab - Bay 2			
TS3E_6620	CCT Base Slab - Bay 6	8	08-Oct-15	15-Oct-15	CCT Base Slab - Bay 6			
TS3E_6590	CCT Base Slab - Bay 3	8	10-Oct-15	17-Oct-15	CCT Base Slab - Bay 3			
TS3E_6630	CCT Base Slab - Bay 7	8	16-Oct-15	23-Oct-15	CCT Base Slab - Bay 7			
TS3E_6600	CCT Base Slab - Bay 4	8	18-Oct-15	25-Oct-15	CCT Base Slab - Bay 4			
TS3E_6640	CCT Base Slab - Bay 8	8	24-Oct-15	31-Oct-15	CCT Base Slab - Bay 8			
TS3 East CCT - Walls + Removal of Struts 7 & 8								
TS3E_6650	CCT Walls - Bay 1	10	10-Oct-15	19-Oct-15	CCT Walls - Bay 1			
TS3E_6690	CCT Walls - Bay 5	10	16-Oct-15	25-Oct-15	CCT Walls - Bay 5			
TS3E_6660	CCT Walls - Bay 2	10	20-Oct-15	29-Oct-15	CCT Walls - Bay 2			
TS3E_6700	CCT Walls - Bay 6	10	26-Oct-15	04-Nov-15	CCT Walls - Bay 6			
TS3E_6670	CCT Walls - Bay 3	10	30-Oct-15	08-Nov-15	CCT Walls - Bay 3			
TS3E_6710	CCT Walls - Bay 7	10	05-Nov-15	14-Nov-15	CCT Walls - Bay 7			
TS3E_6680	CCT Walls - Bay 4	10	27-Nov-15	06-Dec-15	CCT Walls - Bay 4			
TS3E_6720	CCT Walls - Bay 8	10	27-Nov-15	06-Dec-15	CCT Walls - Bay 8			
TS3-East CCT - OHVD Cast in-Situ								
TS3E_6860	TS3(E) Cast OHVD in situ - Bay 1	10	23-Nov-15	02-Dec-15	TS3(E) Cast OHVD in situ - Bay 1			
TS3E_6870	TS3(E) Cast OHVD in situ - Bay 2	10	03-Dec-15	12-Dec-15	TS3(E) Cast OHVD in situ - Bay 2			
TS3E_6880	TS3(E) Cast OHVD in situ - Bay 3	10	09-Dec-15	18-Dec-15	TS3(E) Cast OHVD in situ - Bay 3			
TS3E_6900	TS3(E) Cast OHVD in situ - Bay 5	10	09-Dec-15	18-Dec-15	TS3(E) Cast OHVD in situ - Bay 5			
TS3E_6890	TS3(E) Cast OHVD in situ - Bay 4	10	17-Dec-15	26-Dec-15	TS3(E) Cast OHVD in situ - Bay 4			
TS3E_6910	TS3(E) Cast OHVD in situ - Bay 6	10	19-Dec-15	28-Dec-15	TS3(E) Cast OHVD in situ - Bay 6			
TS3 East CCT - Roof Slab								
TS3E_6730	CCT Roof Slab - Bay 1	10	30-Oct-15	08-Nov-15	CCT Roof Slab - Bay 1			
TS3E_6770	CCT Roof Slab - Bay 5	10	05-Nov-15	14-Nov-15	CCT Roof Slab - Bay 5			
TS3E_6740	CCT Roof Slab - Bay 2	10	09-Nov-15	18-Nov-15	CCT Roof Slab - Bay 2			
TS3E_6780	CCT Roof Slab - Bay 6	10	15-Nov-15	24-Nov-15	CCT Roof Slab - Bay 6			



中國建築工程(香港)有限公司
CHINA STATE CONSTRUCTION ENGINEERING (HONG KONG) LTD.

- Actual Work
- Remaining Work
- Critical Remaining Work
- ◆ Milestone

Page 1 of 5

Contract No. HY/2010/08: Central - Wanchai Bypass Tunnel +(Slip Road 8 Section) - 3 Months Rolling Programme

Date	Revision	Checked	Approved
20-Sep-15	Updated to 20th Sep 2015	DML/WC	

Activity ID	Activity Name	Original Duration	Start	Finish	2015			
					Sep	Oct	Nov	Dec
SR8.EB.1621	ELS Layer 2 - Soft Excavation + Strut Installation	12	03-Nov-15	16-Nov-15				ELS Layer 2 - Soft Excavation + Strut Installation
SR8.EB.1622	ELS Layer 3 - Soft Excavation + Strut Installation	12	17-Nov-15	30-Nov-15				ELS Layer 3 - Soft Excavation + Strut Installation
SR8.EB.1623	ELS Layer 4 - Soft Excavation + Strut Installation	12	01-Dec-15	14-Dec-15				ELS Layer 4 - Soft Excavation + Strut Installation
SR8.EB.1624	ELS Layer 5 - Soft Excavation + Strut Installation	12	15-Dec-15	30-Dec-15				ELS Layer 5 - Soft Excavation + Strut Installation
SR8 West Bound - Ch. 459.000 to 385.000 (Victoria Road / IEC Central Divider)								
TTA Stage 2 - West Bound								
Stage 3 - West Bound (Ref. DRG. No.CDD/SR8/087)								
SR8.WB.3060	Install Dewatering Wells & Carry out Pump Test	20	03-Sep-15 A	30-Sep-15	Install Dewatering Wells & Carry out Pump Test			
Tunnel Ch.459.000 to 385.000 (West Bound) - ELS / CCT / BF+Reinstatement Works								
West Bound - ELS								
SR8.WB.5070	Commence ELS works (Cofferdam Complete)	0	07-Oct-15		◆ Commence ELS works (Cofferdam Complete)			
SR8.WB.5080	ELS Layer 1 - Soft Excavation + Strut Installation	12	07-Oct-15	20-Oct-15	ELS Layer 1 - Soft Excavation + Strut Installation			
SR8.WB.5130	ELS Layer 2 - Soft Excavation + Strut Installation	12	22-Oct-15	04-Nov-15	ELS Layer 2 - Soft Excavation + Strut Installation			
SR8.WB.5140	ELS Layer 3 - Soft Excavation + Strut Installation	12	05-Nov-15	18-Nov-15	ELS Layer 3 - Soft Excavation + Strut Installation			
SR8.WB.5150	ELS Layer 4 - Soft Excavation + Strut Installation	12	19-Nov-15	02-Dec-15	ELS Layer 4 - Soft Excavation + Strut Installation			
SR8.WB.5160	ELS Layer 5 - Soft Excavation + Strut Installation	12	03-Dec-15	16-Dec-15	ELS Layer 5 - Soft Excavation + Strut Installation			
West Bound - CCT Structural Works								
Blinding + Waterproofing								
SR8.WB.5090	Blinding for Bay 1 to Bay 8	9	16-Dec-15	29-Dec-15				
SR8 Ch.385.000 to Ch.317.500 - (Inside Victoria Park to Tunnel Portal)								
SR8 Tunnel - ELS / CCT / BF Works (7 Bays Ch. 385.000 to Ch.317.500)								
Portal Structure								
Base Slab + Drainage								
SR8.VP.5120	Base Slab - Bay 3	8	10-Sep-15 A	22-Sep-15 A	Base Slab - Bay 3			
SR8.VP.5130	Base Slab - Bay 4	8	10-Sep-15 A	22-Oct-15 A	Base Slab - Bay 4			
SR8.VP.5140	Base Slab - Bay 5	8	05-Oct-15	13-Oct-15	Base Slab - Bay 5			
SR8.VP.5150	Base Slab - Bay 6	8	14-Oct-15	23-Oct-15	Base Slab - Bay 6			
SR8.VP.5160	Base Slab - Bay 7	8	24-Oct-15	02-Nov-15	Base Slab - Bay 7			
Wall + Removal of Strut								
SR8.VP.5170	Wall - Bay 1	10	15-Sep-15 A	21-Nov-15	Wall - Bay 1			
SR8.VP.5180	Wall - Bay 2	10	15-Sep-15 A	03-Dec-15	Wall - Bay 2			
SR8.VP.5190	Wall - Bay 3	10	04-Dec-15	15-Dec-15	Wall - Bay 3			
SR8.VP.5200	Wall - Bay 4	10	16-Dec-15	29-Dec-15	Wall - Bay 4			
Roof Slab								
SR8.VP.5240	Roof Slab - Bay 1	10	04-Dec-15	15-Dec-15	Roof Slab - Bay 1			
SR8.VP.5250	Roof Slab - Bay 2	10	16-Dec-15	29-Dec-15	Roof Slab - Bay 2			
Pump Sump E								
SR8.VP.5370	Wall Up to Portal Base Slab Bottom	10	21-Sep-15	03-Oct-15	Wall Up to Portal Base Slab Bottom			
SR8.VP.5380	Fill Up Void Up to Portal Base Slab Bottom	7	05-Oct-15	12-Oct-15	Fill Up Void Up to Portal Base Slab Bottom			
SR8.VP.5390	Wall Up to Portal Roof Bottom	10	14-Oct-15	26-Oct-15	Wall Up to Portal Roof Bottom			
SR8.VP.5400	Wall + Roof Slab	14	27-Oct-15	11-Nov-15	Wall + Roof Slab			
SR8.VP.5440	Slab for Pump Room	21	27-Oct-15	19-Nov-15	Slab for Pump Room			
SR8.VP.5410	Access Chamber above Roof	14	12-Nov-15	27-Nov-15	Access Chamber above Roof			

Activity ID	Activity Name	Original Duration	Start	Finish	2015			
					Sep	Oct	Nov	Dec
SR8.VP.5450	Slab for Elec. Room	21	12-Nov-15	05-Dec-15				Slab for Elec. Room
Backfill & Reinstatement Works Including Removal of Strutting								
SR8.VP.5050	Layer 3&2: Removal of Waling & Struts	7	03-Nov-15	10-Nov-15			Layer 3&2: Removal of Waling & Struts	
SR8 Ch 317.500 to Ch 210.000 - U-Structure & Slab (Victoria Park)								
RC CCT & Backfill Ch317.5000 to Ch240.000								
Structure								
Base Slab								
SR8_1812	SR8 U-structure Base slab (UBA8)	24	08-Sep-15 A	05-Oct-15	SR8 U-structure Base slab (UBA8)			
SR8_1813	Remove SL3 - (UBA8)	14	06-Oct-15	22-Oct-15	Remove SL3 - (UBA8)			
Wall								
SR8_1850B	SR8 U-structure Wall (UBA6-UBA7) - Stage 2	14	10-Apr-15 A	02-Oct-15	SR8 U-structure Wall (UBA6-UBA7) - Stage 2			
SR8_1815A	Remove SL1 (UBA2-UBA5)	18	21-Sep-15	13-Oct-15	Remove SL1 (UBA2-UBA5)			
SR8_1815B	SR8 U-structure Wall (UBA2-UBA5) - Stage 2	21	13-Oct-15	07-Nov-15	SR8 U-structure Wall (UBA2-UBA5) - Stage 2			
SR8_2060	SR8 U-structure Wall (UBA8) - Stage 1	7	23-Oct-15	30-Oct-15	SR8 U-structure Wall (UBA8) - Stage 1			
SR8_2100	Remove SL2, 1 (UBA8)	7	31-Oct-15	07-Nov-15	Remove SL2, 1 (UBA8)			
SR8_2110	SR8 U-structure Wall (UBA8) - Stage 2	7	09-Nov-15	16-Nov-15	SR8 U-structure Wall (UBA8) - Stage 2			
SR8_1950	Waterproofing Works to Wall	14	19-Nov-15	05-Dec-15	Waterproofing Works to Wall			
Utility Through								
SR8_2050	Utility Trough	48	16-Nov-15	14-Jan-16	Utility Trough			
Tsing Fung St - RW & Subway Extension & Toe Wall at Hing Fat St								
Ret. Wall & TF Subway Extension (Portion V)								
Retaining Wall RW8C at Tsing Fung Street (Portion V)								
VP_1770	Install Steel Railing on Top of RW8C	14	20-May-15 A	10-Oct-15	Install Steel Railing on Top of RW8C			
VP_1390	Demolish Top Portion of Existing Wall Head and Kerb	18	05-Jun-15 A	30-Oct-15	Demolish Top Portion of Existing Wall Head and Kerb			
VP_1400	Road Formation - Subbase + Kerb + U-shape Channel	48	30-Oct-15	28-Dec-15	Road Formation - Subbase + Kerb + U-shape Channel			
Retaining Wall + Toe Wall at Hing Fat Street								
Subway Extension at Tsing Fung Street (Portion VIII)								
West Side								
VP_1375.70	Remove Soffit formwork for Roof Slab	32	17-Sep-15 A	02-Oct-15	Remove Soffit formwork for Roof Slab			
East Side								
VP_1375.60	Divert Pedestrian to West Side	2	03-Oct-15	05-Oct-15	Divert Pedestrian to West Side			
VP_1375.60.10	Excavation and Demolition (East Part) of Subway	14	06-Oct-15	22-Oct-15	Excavation and Demolition (East Part) of Subway			
VP_1375.60.20	TFS Subway extension - Blinding and Waterproofing	8	23-Oct-15	31-Oct-15	TFS Subway extension - Blinding and Waterproofing			
VP_1375.60.30	TFS Subway extension - Base slab + Drainage	21	02-Nov-15	25-Nov-15	TFS Subway extension - Base slab + Drainage			
VP_1375.60.40	TFS Subway extension - Walls	18	26-Nov-15	16-Dec-15	TFS Subway extension - Walls			
VP_1375.60.50	TFS Subway extension - Roof Slab	21	17-Dec-15	13-Jan-16	TFS Subway extension - Roof Slab			
RC Works - Toe Wall (RW8E)								
VP_6152	Construct and divert Temporary Footpath	36	20-May-15 A	23-Sep-15 A	Construct and divert Temporary Footpath			
VP_6160	Sheet Piling and Excavation to Formation level	45	21-Sep-15	14-Nov-15	Sheet Piling and Excavation to Formation level			
VP_6180	Blinding layer	36	07-Dec-15	20-Jan-16	Blinding layer			
Works in Victoria Park								
Re-Provisioning Works								
VP_1560	KD5 - Completion of Section 2 of Works (BG & Pavilion)	0		11-Dec-15	KD5 - Completion of Sect			

Activity ID	Activity Name	Original Duration	Start	Finish	2015			
					Sep	Oct	Nov	Dec
Pavilion								
Materials Submission								
VP_6660	Issue P.O. / Manufacturing / Fabrication	48	20-Apr-15 A	22-Sep-15 A	Issue P.O. / Manufacturing / Fabrication			
Construction Works - BG Pavillion								
VP_1380	PV- structural works, G/F to Roof	24	04-Sep-15 A	25-Sep-15	PV- structural works, G/F to Roof			
VP_1420	PV - ABWF	36	26-Sep-15	10-Nov-15	PV - ABWF			
VP_1430	PV - E&M Works	36	06-Oct-15	17-Nov-15	PV - E&M Works			
VP_1460	PV - T&C	12	18-Nov-15	01-Dec-15	PV - T&C			
VP_1470	PV - Statutory Inspections & Certification	24	18-Nov-15	15-Dec-15	PV - Statutory Ins			
VP_1480	PV - Complete KD5 - Works in Section 2	0		15-Dec-15	◆ PV - Complete KD			
Bowling Green								
Construction Works								
VP_1740	BG - Install Conduit and Lighting System	36	18-Jun-15 A	22-Sep-15 A	BG - Install Conduit and Lighting System			
VP_1730	BG - Install Irrigation System	24	21-Sep-15 A	15-Oct-15	BG - Install Irrigation System			
VP_1745	Test & Commission - Lighting System	16	02-Oct-15	20-Oct-15	Test & Commission - Lighting System			
VP_1450	BG - Re-provisioning works - Hardscape & Furnitures (Green Turf/ Granite Tiles)	36	02-Oct-15	13-Nov-15	BG - Re-provisioning works - Hardscape & Furnitures (Green Turf/ Granite			
VP_1455	Statutory Inspection and Certification	24	14-Nov-15	11-Dec-15	Statutory Inspection and			
VP_1490	BG - Completion of KD5 - Section 2	0		11-Dec-15	◆ BG - Completion of KD5			
Establishment Works for Landscape Softworks								
KD11 - Section 7A: Portion XIV & XV (Victoria Park Open Space)								
EW_1000	Establishment Works - for Landscape Softworks and transplanted trees in Portion XIV & XV	901	23-Feb-15 A	14-Dec-17				
KD12 - Section 7B: Portion VI & VII (Reprov. Bowling Green Area)								
EW_1010	Establishment Works - for Landscape Softworks and transplanted trees in Portion VI & VII	365	16-Dec-15	14-Dec-16				
Preservation and Protection of Trees								
PPT_0000	Preservation and Protection of Existing Trees	1088	21-Mar-13 A	20-Nov-16				

CEDD Contract No. HK/2012/08
Wan Chai Development Phase II
Central -Wan Chai Bypass at Wan Chai West

Activity ID	Activity Name	Start	Finish	Remaining Duration	Activity % Complete	2015					2016
						Sep	Oct	Nov	Dec	Jan	
Total		01-Jan-15 A	28-Dec-15	80							
HK/2012/08 Revised Works Programme Rev.5_Updated as of 20-Sep-15		01-Jan-15 A	28-Dec-15	80							
Dredging and Reclamation		21-Aug-15 A	15-Dec-15	71							
Marine Work Construction		21-Aug-15 A	15-Dec-15	71							
Zone A1		11-Nov-15	15-Dec-15	30							
Seawall Construction - Zone A1		11-Nov-15	15-Dec-15	30							
MAR10310	Zone A1 - seawall - Type 3 - fill rock mound	11-Nov-15	18-Nov-15	8	0%						
MAR10312	Zone A1 - seawall - Type 3 - lay toe block and leveling stone	19-Nov-15	26-Nov-15	8	0%						
MAR10320	Zone A1 - seawall - install block seawall type 3	27-Nov-15	04-Dec-15	8	0%						
MAR10340	Zone A1 - seawall - place type A behind seawall Type 3	05-Dec-15	10-Dec-15	6	0%						
MAR10345	Zone A1 - seawall - lay geotextile and filter behind seawall Type 3	11-Dec-15	15-Dec-15	4	0%						
Zone A2		21-Aug-15 A	06-Oct-15	12							
Seawall Construction - Zone A2		21-Sep-15	06-Oct-15	12							
MAR10815	Zone A2 - seawall - place type A behind seawall Type 4 and Type 13 up to -1.5 mPD	21-Sep-15	26-Sep-15	6	0%						
MAR10817	Zone A2 - seawall - lay geotextile and filter behind seawall Type 4 and Type 13 up to -1.5 mPD	29-Sep-15	06-Oct-15	6	0%						
Filling - Zone A2		21-Aug-15 A	21-Sep-15	1							
MAR20365	Zone A2(2) - Public Fill -4.0 to +4.0mPD (behind Type 4 & 13 for temp channel outlet)	21-Aug-15 A	21-Sep-15	1	95%						
Zone C		21-Sep-15	28-Oct-15	30							
Dredging - Zone C		21-Sep-15	28-Oct-15	30							
MAR11520	Zone C - Cut existing pipe pile (2 nos.)	21-Sep-15	28-Oct-15	30	0%						
Zone D		21-Sep-15	15-Dec-15	71							
Seawall Construction - Zone D		21-Sep-15	19-Nov-15	49							
Seawall 10 & 11		21-Sep-15	22-Oct-15	25							
MAR20582	Zone D - fill rock mound for Seawall 10 & 11	21-Sep-15	22-Sep-15	2	0%						
MAR20584	Zone D - lay toe block and level stone for Seawall 10 & 11	23-Sep-15	03-Oct-15	8	0%						
MAR20605	Zone D - Install block seawall 10	05-Oct-15	20-Oct-15	14	0%						
MAR20610	Zone D - Install block seawall 11	06-Oct-15	22-Oct-15	14	0%						
Seawall 9		23-Oct-15	19-Nov-15	24							
MAR11858	Zone D - fill rock mound for Seawall 9	23-Oct-15	24-Oct-15	2	0%						
MAR11859	Zone D - lay toe block and level stone for Seawall 9	26-Oct-15	03-Nov-15	8	0%						
MAR12300	Zone D - Install block seawall 9	04-Nov-15	19-Nov-15	14	0%						
Filling - Zone D		19-Nov-15	15-Dec-15	23							
Filling at North		19-Nov-15	15-Dec-15	23							

- Remaining Level of Effort
- Actual Level of Effort
- Remaining Work
- Actual Work
- Critical Remaining Work

Project Star :22-Jan-13
Project End: 21-Jul-18
Date Date: 20-Sep-15

3 Months Rolling Programme _September to November 2015
(For Non-CRIII Zone)

Detailed Works Programme Revision 5			
Date	Revision	Checked	Approved
20-Sep-15	3MRP		

CEDD Contract No. HK/2012/08
Wan Chai Development Phase II
Central -Wan Chai Bypass at Wan Chai West

Activity ID	Activity Name	Start	Finish	Remaining Duration	Activity % Complete	2015					2016
						Sep	Oct	Nov	Dec	Jan	
MAR12160	Zone D - Sorted Public Fill up to +2.5mPD (north area)	19-Nov-15	02-Dec-15	12	0%						
MAR12180	Zone D - Sorted & Compacted Public Fill from +2.5 to +4mPD (north area)	02-Dec-15	15-Dec-15	12	0%						
Works for Section Completion		01-Jan-15 A	28-Dec-15	80							
Construction		01-Jan-15 A	28-Dec-15	80							
Section II - MVB Structure		08-Aug-15 A	24-Dec-15	79							
MVB Substructure - ELS & Structural Works for Portion A		08-Aug-15 A	24-Dec-15	79							
MVB Substructure - Structural Works for Portion A		08-Aug-15 A	24-Dec-15	79							
SII11120	Sec II - MVB A - Construct B3M slab, column and wall	08-Aug-15 A	27-Nov-15	55	24%						
SII11140	Sec II - MVB A - Remove Strut SL7 and SL6	18-Dec-15	24-Dec-15	5	0%						
MVB Substructure - ELS & Structural Works for Portion B		09-Sep-15 A	21-Sep-15	1							
MVB Substructure - ELS for Portion B		09-Sep-15 A	21-Sep-15	1							
SII11760	Sec II - MVB B: Excavation down to -25.45mPD	09-Sep-15 A	21-Sep-15	1	90%						
MVB Substructure - Piling Works		21-Sep-15	26-Nov-15	55							
MVB C - Prebored H Piles		21-Sep-15	26-Nov-15	55							
SII10400	Sec II - MVB C - construct prebored H-piles	21-Sep-15	03-Nov-15	35	0%						
SII10420	Sec II - MVB C - Loading Test for Prebored H-pile	04-Nov-15	26-Nov-15	20	0%						
Section II A - CWB Tunnel & Slip Road Structures and Facilities		17-Jan-15 A	28-Dec-15	80							
CWB CRIII & A1		17-Jul-15 A	28-Dec-15	80							
CWB A1 - ELS & Tunnel Structure		17-Jul-15 A	28-Dec-15	80							
CWB A1 - ELS Remaining		17-Jul-15 A	03-Nov-15	35							
SIIA11286	Sec IIA - CWB A1 : Shoring & Excavation (Remaining)	17-Jul-15 A	03-Nov-15	35	0%						
CWB A1 - Tunnel Structure Remaining		04-Nov-15	28-Dec-15	45							
SIIA13045	Sec II A - CWB A1: Pile head + trough + base & wall + OHVD unit (Bay 1)	04-Nov-15	28-Dec-15	45	0%						
SIIA13048	Sec IIA - CWB A1 : Pile head + trough + base & wall + OHVD (Bay 3)	04-Nov-15	28-Dec-15	45	0%						
CWB A1 - Other Works		20-Sep-15	13-Oct-15	24							
SIIA15500	Zone A2(2) - Public Fill -4.0 to +4.0mPD (behind Type 4 & 13 for temp channel outlet)	20-Sep-15	13-Oct-15	24	0%						
CWB A2(2)		20-Aug-15 A	23-Nov-15	51							
CWB A2 (2) - Dwall & Piling		20-Aug-15 A	23-Nov-15	51							
SIIA13500	Sec II A - CWB A2 : backfill to +4.0mPD	20-Aug-15 A	22-Sep-15	2	90%						
SIIA15260	Sec II A - CWB A2 : Predrilling for Dwall & piles	11-Sep-15 A	09-Nov-15	39	2%						
SIIA15280	Sec II A - CWB A2 : Ground treatment	21-Sep-15	09-Nov-15	40	0%						
SIIA15300	Sec II A - CWB A2 : construct Guide Wall	30-Sep-15	17-Nov-15	40	0%						
SIIA15420	Sec II A - CWB A2 Loading Test for Prebored H-pile	30-Oct-15	23-Nov-15	20	0%						
CWB B (& A2(1))		30-Apr-15 A	11-Dec-15	67							
CWB B - Dwall & Piling		30-Apr-15 A	06-Nov-15	37							
SIIA11540	Sec II A - CWB B (&A2(1)) : Construct pre-bored H-pile	30-Apr-15 A	22-Sep-15	1	98%						
SIIA11560	Sec II A - CWB B: Concrete Plug (MTR TWL)	15-Jun-15 A	06-Nov-15	37	40.32%						

CEDD Contract No. HK/2012/08
Wan Chai Development Phase II
Central -Wan Chai Bypass at Wan Chai West

Activity ID	Activity Name	Start	Finish	Remaining Duration	Activity % Complete	2015					2016
						Sep	Oct	Nov	Dec	Jan	
SIIA11565	Sec II A - CWB B: Sheetpile Bulkhead Wall for "Delink"	29-Sep-15	26-Oct-15	21	0%						
CWB B - Pumping Test Preparation		13-Jun-15 A	11-Dec-15	67							
SIIA11580	Sec II A - CWB B: Dwall sonic test / interface core	13-Jun-15 A	30-Oct-15	31	48.33%						
SIIA11600	Sec II A - CWB B: Dwall precaution grout / fissure grout / grout curtain	13-Jun-15 A	30-Oct-15	31	48.33%						
SIIA11620	Sec II A - CWB B: Install dewatering/ recharging/ observation well	14-Jul-15 A	04-Nov-15	35	12.5%						
SIIA11640	Sec II A - CWB B: Pumping Test	06-Nov-15	14-Nov-15	7	0%						
SIIA11660	Sec II A - CWB B: Demolish Guide Wall	06-Nov-15	11-Dec-15	30	0%						
CWB C (W)		16-Jun-15 A	02-Dec-15	60							
CWB C(W) - Dwall Construction		16-Jun-15 A	24-Nov-15	53							
SIIA11960	Sec II A - CWB CW: Concrete Plug (MTR TWL)	16-Jun-15 A	24-Nov-15	53	14.52%						
SIIA11980	Sec II A - CWB CW: D-wall contact grout / fissure grout	21-Sep-15*	09-Nov-15	40	0%						
SIIA12000	Sec II A - CWB CW: Dwall sonic test / interface core	21-Sep-15	09-Nov-15	40	0%						
CWB C(W) - Pumping Test Preparation/ Pumping Test		21-Sep-15	02-Dec-15	60							
SIIA12020	Sec II A - CWB CW: Install dewatering/ recharging/ observation wells	21-Sep-15	09-Nov-15	40	0%						
SIIA12040	Sec II A - CWB CW: Pumping Test	25-Nov-15	02-Dec-15	8	0%						
CWB C (E)		30-Mar-15 A	28-Oct-15	30							
CWB C(E) & Enabling Work - Dwall Construction		30-Mar-15 A	28-Oct-15	30							
CWB C(E) - Dwall Construction		30-Mar-15 A	08-Oct-15	14							
SIIA12980	Sec II A - CWB CE: ground pre-treatment	30-Mar-15 A	08-Oct-15	14	79%						
SCL Enabling Work - Dwall Construction		21-Sep-15	28-Oct-15	30							
SIIA13085	Sec II A - CWB CE: Cut existing pipe piles (2 nos.)	21-Sep-15	28-Oct-15	30	0%						
CWB D - Slip Road 1		17-Jan-15 A	25-Nov-15	54							
CWB D - Slip Road 1 - Dwall Construction & Piling		17-Jan-15 A	14-Nov-15	45							
SIIA12260	Sec II A - CWB SR1: ground pre-treatment	17-Jan-15 A	05-Oct-15	11	90.83%						
SIIA12305	Sec II A - CWB SR1: construct Permanent DWall (1.2m thk)	07-Apr-15 A	15-Oct-15	20	79%						
SIIA12310	Sec II A - CWB SR1: construct pre-bored H-pile	20-Aug-15 A	11-Nov-15	41	2%						
SIIA12340	Sec II A - CWB SR1: Concrete Plug (MTR TWL)	07-Oct-15	14-Nov-15	32	0%						
CWB D - Slip Road 1 - Pumping Test Preparation/ Pumping Test		22-Sep-15	25-Nov-15	52							
SIIA12360	Sec II A - CWB SR1: Grout curtain / contact grout for Dwall	22-Sep-15	09-Nov-15	38	0%						
SIIA12380	Sec II A - CWB SR1: Dwall sonic test / interface core	22-Sep-15	09-Nov-15	38	0%						
SIIA12400	Sec II A - CWB SR1: Install dewatering/ recharging/ observation wells	30-Sep-15	16-Nov-15	38	0%						
SIIA12420	Sec II A - CWB SR1: Pumping Test	16-Nov-15	25-Nov-15	8	0%						
Section VI A - Box Culvert La, L1 & FRP-L Construction		21-Sep-15	30-Nov-15	58							
Sec VI C - Box Culvert La bay 4 (North)		21-Sep-15	30-Nov-15	58							
CUL11652	Sec VI C - Culvert L - bay 4 (north half) - excavate to formation level	21-Sep-15	13-Oct-15	18	0%						
CUL11655	Sec VI C - Culvert L - bay 4 (north half) - place granular fill and lay geotextile filter	14-Oct-15	26-Oct-15	10	0%						
CUL11660	Sec VI C - Culvert L - bay 4 - backfill	27-Oct-15	30-Nov-15	30	0%						

CEDD Contract No. HK/2012/08
Wan Chai Development Phase II
Central -Wan Chai Bypass at Wan Chai West

Activity ID	Activity Name	Start	Finish	Remaining Duration	Activity % Complete	2015					2016
						Sep	Oct	Nov	Dec	Jan	
Box Culvert L1 & FRP-L Construction (Bay 5 - Bay 7)		21-Sep-15	21-Dec-15	76							
Box Culvert L1 & FRP-L - Bay 5 to 7 Structure		21-Sep-15	23-Oct-15	26							
Box Culvert L1 & FRP-L - Precast Unit Installation		21-Sep-15	23-Oct-15	26							
CUL10874	Sec VI C - Culvert L - bay 5-7 - Demolition of Temp Platform & Cofferdam ready for towing precast culvert units	21-Sep-15	06-Oct-15	12	0%						
CUL10875	Sec VI C - Culvert L - bay 5-7 (& Bay 4b) - install precast culvert units & Touch Up	07-Oct-15	23-Oct-15	14	0%						
Box Culvert L1 & FRP-L - Bay 5 & 6 Backfill & Others		24-Oct-15	21-Dec-15	50							
CUL10878	Sec VI C - Culvert L - bay 5, 6 - backfill to +4.0mPD	24-Oct-15	09-Dec-15	40	0%						
CUL10879	Sec VI C - Culvert L - bay 5, 6 - trim to formation level and handover Area 6	10-Dec-15	21-Dec-15	10	0%						
Box Culvert L1 & FRP-L - Bay 9 to 11		21-Sep-15	02-Dec-15	60							
Box Culvert L1 & FRP-L - Bay 9-11 Others		21-Sep-15	02-Dec-15	60							
CUL12020	Culvert L - bay 9-11 - backfill from top slab to final formation level	21-Sep-15	02-Dec-15	60	0%						
Box Culvert L1 & FRP-L - Bay 12 to 13		03-Jun-15 A	14-Dec-15	70							
Box Culvert L1 & FRP-L - Bay 12 to 13 Piling		21-Sep-15	28-Oct-15	30							
CUL12356	Culvert L - bay 13 - construct pre-bored H-pile (PC10 & PC11)	21-Sep-15*	28-Oct-15	30	0%						
Box Culvert L1 & FRP-L - Bay 12 to 13 Temp Work & ELS		03-Jun-15 A	02-Dec-15	60							
CUL12385	Culvert L - bay 12 - ELS and bulk excavation & Dwall Break Through Ready for Diversion	03-Jun-15 A	07-Oct-15	13	0%						
CUL12405	Culvert L - bay 12 & 13 - extract sheet piles ready for flow diversion (from Bay 4 to Bay 11)	07-Oct-15	10-Oct-15	4	0%						
CUL12480	Culvert L - bay 12 & 13 - pile head treatment and construct pile cap PC9, PC10 & PC11	29-Oct-15	02-Dec-15	30	0%						
Box Culvert L1 & FRP-L - Bay 12 to 13 Structure		21-Sep-15	14-Dec-15	70							
CUL12545	Culvert L - bay 12 & 13 - Construct Precast Units (off site)	21-Sep-15*	02-Dec-15	60	0%						
CUL12548	Culvert L - bay 12 & 13 - Deliver and Install Precast Units	03-Dec-15	14-Dec-15	10	0%						
Section VI C - Area 3, 6, 8A & 8C		01-Jan-15 A	19-Dec-15	75							
Area 8A & 8C - Seawall Modification		30-May-15 A	03-Dec-15	61							
Modification of Seawall		30-May-15 A	03-Dec-15	61							
Modification of Seawall - Zone 1 & 2		30-May-15 A	03-Dec-15	61							
PRS10043	Sec VIC - Pipe Pile P32 to P62	30-May-15 A	23-Sep-15	3	50%						
PRS10044	Sec VIC - P33, P33A, P34, P34A, P35, P35A	20-Aug-15 A	06-Oct-15	12	50%						
PRS10060	Sec VIC - Working Platform & P7 to P18, P23 & P24, P20A & P19	07-Oct-15	25-Nov-15	42	0%						
PRS10080	Sec VIC - Working Platform & P59, P59A, P60, P60A, P62, P62A	27-Oct-15	03-Dec-15	32	0%						
Modification of Seawall - Zone 4		23-Sep-15	27-Oct-15	26							
PRS10160	Sec VIC - Working Platform (Zone 4)	23-Sep-15	05-Oct-15	8	0%						
PRS10180	Sec VIC - Pipe Pile P63 to P68 & P64A (Zone 4)	05-Oct-15	27-Oct-15	18	0%						
Area 6 - Box Culvert bay 5-6		18-Apr-15 A	27-Nov-15	56							
SVIC10000	Sec VI C - [Summary] Construct Box Culvert Bay 5-6	18-Apr-15 A	23-Oct-15	26	71.74%						
SVIC10020	Sec VI C - backfill to formation level at Area 6	24-Oct-15	27-Nov-15	30	0%						
Area 3 - Box Culvert bay 4 and Roadwork		01-Jan-15 A	19-Dec-15	75							
SVIC10220	Sec VI C - [Summary] Construct Box Culvert Bay 4 in Area 3	01-Jan-15 A	26-Oct-15	28	60%						

CEDD Contract No. HK/2012/08
Wan Chai Development Phase II
Central -Wan Chai Bypass at Wan Chai West

Activity ID	Activity Name	Start	Finish	Remaining Duration	Activity % Complete	2015				2016
						Sep	Oct	Nov	Dec	Jan
SVIC10240	Sec VI C - reinstate and compact sub-base above Culvert L Bay 4 in Area 3	01-Dec-15	08-Dec-15	7	0%					
SVIC10260	Sec VI C - reinstate road kerb in Area 3	01-Dec-15	07-Dec-15	6	0%					
SVIC10280	Sec VI C - reinstate flexible pavement in Area 3	08-Dec-15	14-Dec-15	6	0%					
SVIC10300	Sec VI C - reinstate footpath in Area 3	15-Dec-15	19-Dec-15	5	0%					
SVIC10320	Sec VI C - reinstate traffic sign and road marking in Area 3	19-Dec-15	19-Dec-15	1	0%					
Section VI D - Area 8B & 10		27-Sep-15	24-Dec-15	73						
WDII Box 1 Construction		27-Sep-15	24-Dec-15	73						
WDII Box 1 Submission and Approval / Material Procurement		27-Sep-15	25-Nov-15	60						
PCU60410	Sec VI D - WD II Box 1 - Prepare Subcontract for Box 1 structure	27-Sep-15	25-Nov-15	60	0%					
WDII Box 1 Existing Pile Head and Dry Dock		24-Oct-15	24-Dec-15	53						
WD-C3030	Sec VI D - form dry dock / waterproofing for Box 1 structure	24-Oct-15	15-Dec-15	45	0%					
WDII Box 1 Existing Pile Head Treatment		03-Dec-15	24-Dec-15	18						
PRS10255	Sec VIC - Mobilisation	03-Dec-15	10-Dec-15	6	0%					
PRS10260	Sec VIC - Pile Head at Pile A3	10-Dec-15	24-Dec-15	12	0%					
Section VII - Remainder Works		21-Sep-15	30-Nov-15	58						
Demolition of Interim Landing Steps and Construct Permanent Seawall at CRIII		21-Sep-15	30-Nov-15	58						
SVII10220	Sec VII - remove interim landing steps - protect open cut slope	21-Sep-15	22-Sep-15	2	0%					
SVII10240	Sec VII - remove interim landing steps - remove old seawall wall blocks	23-Sep-15	30-Sep-15	6	0%					
SVII10260	Sec VII - seawall - remove old rubble mound and dredging	02-Oct-15	08-Oct-15	6	0%					
SVII10280	Sec VII - seawall - final hydrographic survey	09-Oct-15	16-Oct-15	7	0%					
SVII10300	Sec VII - seawall - [summary] fill rubble mound	17-Oct-15	23-Nov-15	31	0%					
SVII10320	Sec VII - seawall - [summary] place caisson seawall type 1B(4), 2D and 1	09-Nov-15	30-Nov-15	19	0%					